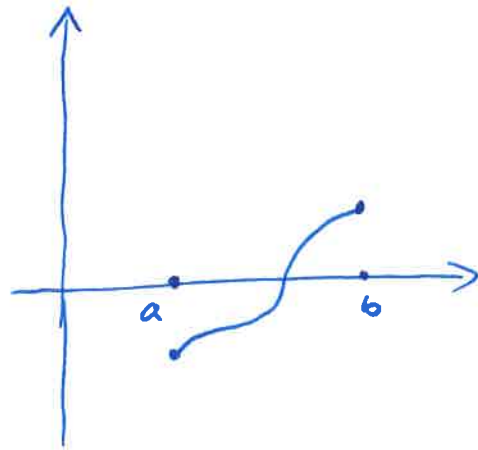
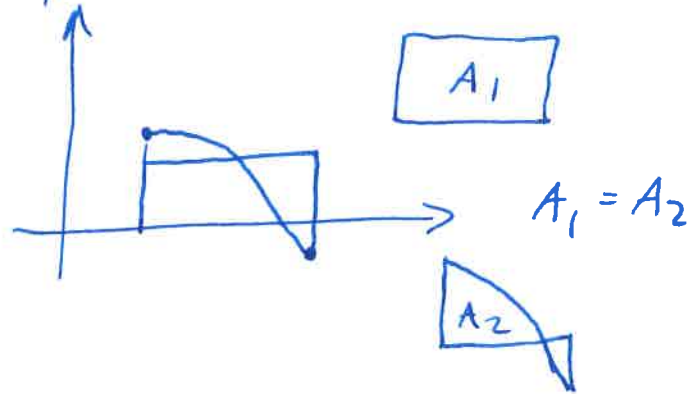
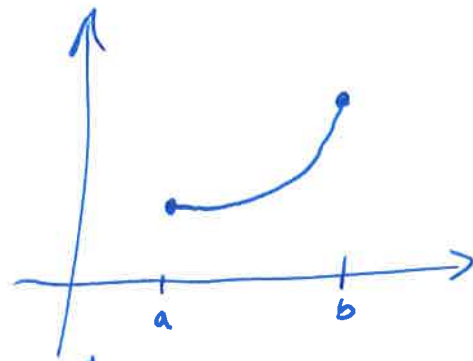


YHDISTÄ LAUSE JA  
SIIHEN LIITTYVÄ  
KUVA

DIFF. LASKENNAN  
VÄLIARVO LAUSE

INT. LASKENNAN  
VÄLIARVO LAUSE

BOLZANON  
LAUSE



$f$  jva

$$\exists c \in (a, b) : f'(c) = \frac{f(b) - f(a)}{b - a}$$

$$\exists c \in (a, b) : f(c)(b - a) = \int_a^b f(t) dt$$

$$f(a) f(b) < 0 \Rightarrow \exists c \in (a, b) : f(c) = 0$$