

Thesis

Juha-Matti Huusko:n *kirjoittama*

TIEDOSTO	OODLEDATA_TEMP_TURNITINTOOL_1080033834.JM_THESIS_FINAL_EMPTY.PDF (271.08K)		
PALAUTUSAIKA	23-TAMMIKUUTA-2017	SANAMÄÄRÄ	16730
PALAUTUSTUNNUS	05:05IP. 756572215	MERKKIEN LUKUMÄÄRÄ	69979



UNIVERSITY OF
EASTERN FINLAND

93

PUBLICATIONS OF THE UNIVERSITY OF EASTERN FINLAND
DISSERTATIONS IN FORESTRY AND NATURAL SCIENCES

N:o xx

Juha-Matti Huusko

METHODS FOR COMPLEX ODES BASED ON LOCALIZATION, INTEGRATION AND OPERATOR THEORY

3

ACADEMIC DISSERTATION

To be presented by the permission of the Faculty of Science and Forestry for public examination in the Auditorium E100 in Educa Building at the University of Eastern Finland, Joensuu, on April-May 2017.

3

University of Eastern Finland
Department of Physics and Mathematics
Joensuu 2017

Grano Oy
Jyväskylä, 2017
Editors: Pertti Pasanen, Pekka Toivanen,
Jukka Tuomela, and Matti Vornanen

Distribution:
University of Eastern Finland Library / Sales of publications
julkaisumyynti@uef.fi
<http://www.uef.fi/kirjasto>

ISBN: xxx-xxx-xx-xxxx-x (print) ³
ISSNL: 1798-5668
ISSN: 1798-5668 ³
ISBN: xxx-xxx-xx-xxxx-x (pdf)
ISSNL: 1798-5668
ISSN: 1798-5668

Author's address: University of Eastern Finland
Department of Physics and Mathematics
P.O. Box 111
FI-80101 Joensuu
FINLAND
email: juha-matti.huusko@uef.fi

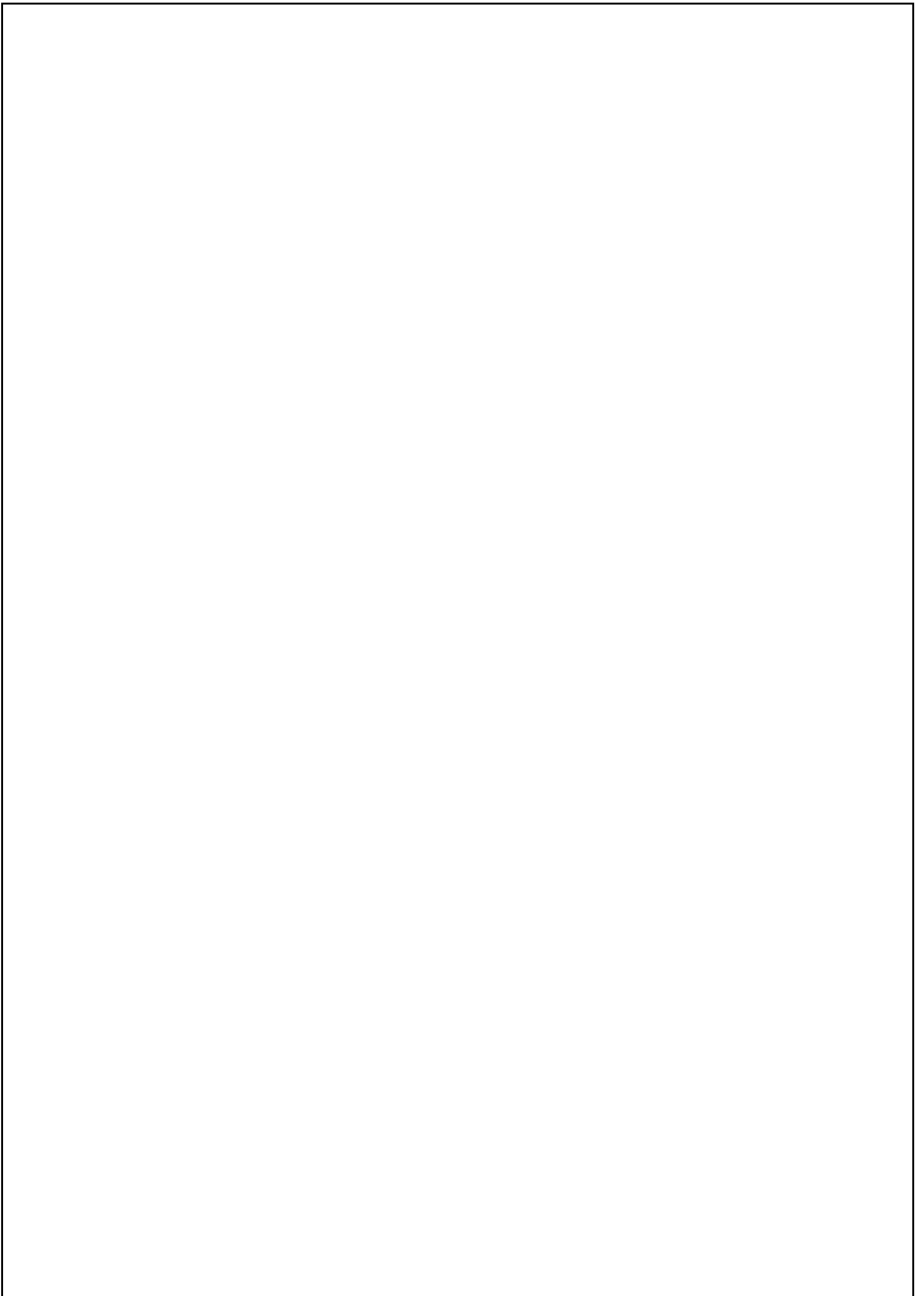
Supervisors: Professor Jouni Rättyä, Ph.D.
University of Eastern Finland
Department of Physics and Mathematics
P.O. Box 111
FI-80101 Joensuu
FINLAND
email: jouni.rattya@uef.fi

Assistant Professor Janne Heittokangas, Ph.D.
University of Eastern Finland
Department of Physics and Mathematics
P.O. Box 111
FI-80101 Joensuu
FINLAND
email: janne.heittokangas@uef.fi

Reviewers: Professor Martin Chuaqui, Ph.D.
Pontificia Universidad Católica de Chile
Departamento de Matemáticas
Casilla 306
Correo 22, Santiago
CHILE
email: mchuaqui@mat.puc.cl

Professor Hasi Wulan, Ph.D.
Shantou University
Department of Mathematics
515063 Shantou
P.R. CHINA
email: wulan@stu.edu.cn

Opponent: Professor Shamil Makhmutov, Ph.D.
Sultan Qaboos University
Department of Mathematics & Statistics
P.O. Box 36
Al-Khodh 123, Muscat
OMAN
email: makhm@squ.edu.om



Juha-Matti Huusko

84 Methods for complex ODEs based on localization, integration and operator theory
Joensuu: University of Eastern Finland, 2017
Publications of the University of Eastern Finland
Dissertations in Forestry and Natural Sciences

ABSTRACT

This thesis introduces some new results concerning linear differential equations

$$f^{(n)} + A_{n-1}f^{(n-1)} + \cdots + A_1f' + A_0f = A_n, \quad (*)$$

83
134
where $n \geq 2$ and A_0, \dots, A_n are analytic in a simply connected domain D of the complex plane. Typically D is the unit disc. Before presenting these new results, some background is recalled. Localization combined with known results implies lower bounds for the iterated order of growth of solutions of (*). Straightforward integration combined with an operator theoretic approach yields sufficient conditions for the coefficients which place all solutions of (*) or their derivatives in a general growth space $H_\omega^\infty(D)$. Moreover, the operator theoretic approach combined with certain tools such as representation formulas and Carleson's theorem indicates sufficient conditions such that all solutions are bounded, or they belong to the Bloch space or BMOA. The counterpart of the Hardy-Stein-Spencer formula for higher order derivatives and the oscillation of solutions are also discussed.

MSC 2010: 30H10, 30H30, 34M10

Keywords: Bloch space, BMOA, bounded function, differential equation, growth space, Hardy space, integration, localization, operator theory, order of growth, oscillation of solutions

ACKNOWLEDGEMENTS

76

First of all, I wish to express my sincerest gratitude to my supervisors, Professor Jouni Rättyä and Assistant Professor Janne Heittokangas, for their valuable advice and constant encouragement.

My warmest thanks are due to the faculty and staff of the Department of Physics and Mathematics of the University of Eastern Finland for providing me with a friendly environment. In particular, I would like to thank Docent Janne Gröhn and Doctor María Martín for their kind guidance over the years.

For financial support, I am indebted to the Academy of Finland through the research project of Rättyä #268009 and to the Faculty of Science and Forestry of the University of Eastern Finland, projects #930349, #4900024, #23376.

I wish to thank my family and friends for their support. I thank all my friends in Kuhmo and Joensuu and all my international friends. In particular, thanks to Juha, Jani, Joni, Amit, Biswajit, Mezbah, Gaurav, Samridhhi, Rahul, Somnath and Muthukumar.

I owe thanks to my parents Tuija and Kauko. As it takes a whole village to raise a child, I also thank the people in my home village Ahovaara. I recall a surprisingly hard geometrical problem, which my lumberjack father asked me. It concerns a bent wooden log: *if a circular arc is 10 m long and, at maximum, 5 cm apart from the chord joining its endpoints, then how large is the whole circle?*

Finally, I need to express my deepest thanks to my fiancé Afrin for her love and understanding.

Joensuu, January 23, 2017

Juha-Matti Huusko

3

LIST OF PUBLICATIONS

This thesis consists of the present review of the author's work in the field of complex differential equations and the following selection of the author's publications:

35

I J.-M. Huusko, "Localisation of linear differential equations in the unit disc by conformal map," *Bull. Aust. Math. Soc.* **93** (2016), no. 2, 260–271.

1

II J.-M. Huusko, T. Korhonen and A. Reijonen, "Linear differential equations with solutions in the growth space H_ω^∞ ," *Ann. Acad. Sci. Fenn. Math.* **41** (2016), 399–416.

10

III J. Gröhn, J.-M. Huusko and J. Rättyä, "Linear differential equations with slowly growing solutions." Submitted preprint.
<https://arxiv.org/abs/1609.01852>

3

Throughout the overview, these papers will be referred to by Roman numerals.

AUTHOR'S CONTRIBUTION

The publications selected in this dissertation are original research papers on complex differential equations.

Paper II is a continuation of research done in Joensuu. All authors have made an equal contribution.

In Paper III, all authors have made an equal contribution.

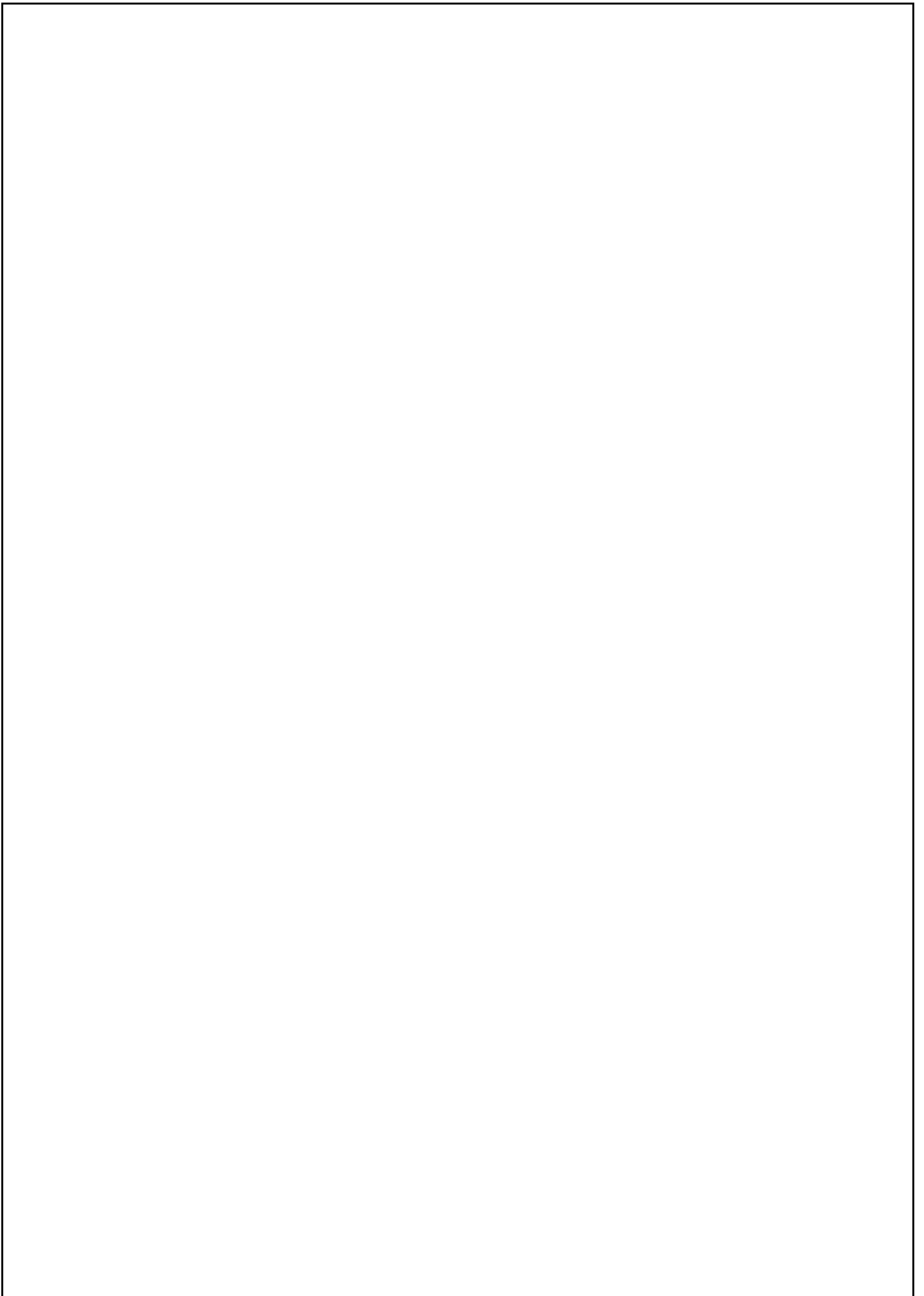
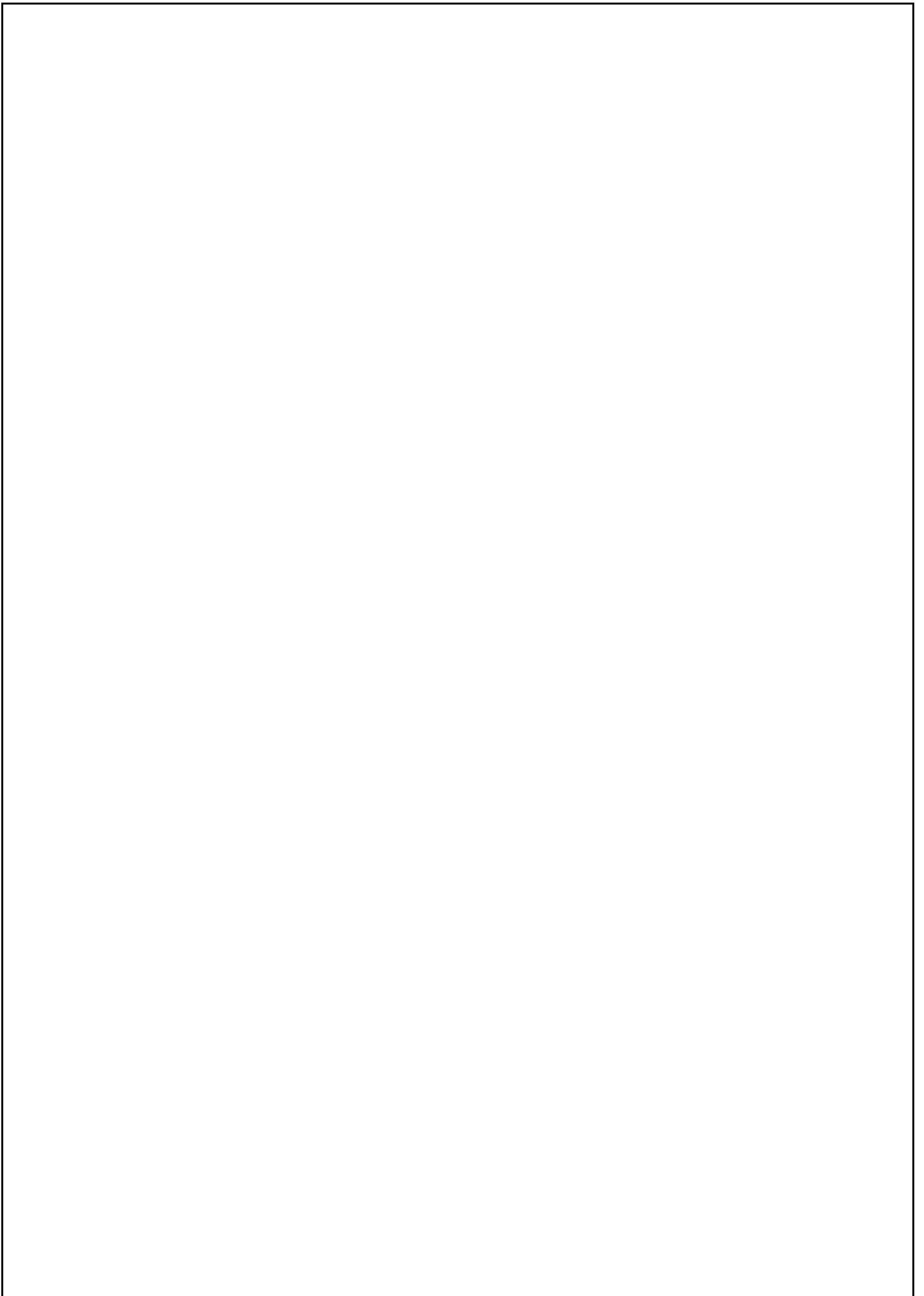


TABLE OF CONTENTS

1	Introduction	1
2	Differential equations and growth of solutions	1
2.1	Observations related to differential equations.....	1
2.2	General growth space.....	2
2.3	Iterated order of growth of solutions.....	4
2.4	Equations with coefficients of a particular form.....	7
3	Function spaces and zero separation of solutions	9
3.1	Hardy and Q_K spaces.....	9
3.2	Separation of zeros and critical points.....	12
4	Tools for the study of ODEs	15
4.1	Localization and pseudo-hyperbolic discs.....	15
4.2	Integral estimates.....	17
4.3	Operator theoretic approach.....	19
5	Summary of papers	21
5.1	Summary of Paper I.....	21
5.1.1	The localization method for linear ODEs.....	21
5.1.2	Iterated order of growth of solutions.....	23
5.2	Summary of Paper II.....	25
5.2.1	Integration method involving multiple steps.....	25
5.2.2	Integration method via a differentiation identity.....	26
5.2.3	A classical theorem in the plane.....	28
5.3	Summary of Paper III.....	29
5.3.1	A counterpart of the Hardy-Stein-Spencer formula for higher order derivatives.....	29
5.3.2	Solutions in H^∞ , BMOA and \mathcal{B} by an operator theoretic approach.....	30
5.3.3	A zero separation result by localization and a growth estimate.....	32
	BIBLIOGRAPHY	35



1 Introduction

119

The intention of this survey part of the thesis is to describe some methods used in the study of complex linear ordinary differential equations (ODEs), in particular, in the study of

$$f^{(k)} + A_{k-1}f^{(k-1)} + \dots + A_1f' + A_0f = 0, \quad (1.1)$$

where the coefficients A_j are analytic in a simply connected domain $D \subset \mathbb{C}$ and $k \in \mathbb{N} \setminus \{1\}$. It is well-known that in this case solution f is analytic in D , denoted by $f \in \mathcal{H}(D)$. Typically D is the whole complex plane \mathbb{C} or the unit disc $\mathbb{D} = \{z \in \mathbb{C} : |z| < 1\}$.

Localization is a general method, which allows us to implement known results to new domains. Nevanlinna theory combined with the standard order reduction method yields if-and-only-if relations between the iterated M -order of growth $\sigma_{M,n}$ of coefficients and solutions, see [37], for example. One simple relation is that all solutions f of (1.1) satisfy

$$\sigma_{M,n+1}(f) \leq \max_{0 \leq j \leq k-1} \sigma_{M,n}(A_j), \quad n \in \mathbb{N}, \quad (1.2)$$

and the equality is attained for some solution f . We describe a localization method of linear ODEs and apply these known relations to equations of a special form, for example, to the equation

$$f'' + A_1(z) \exp\left(\frac{a_4}{(1-z)^{a_3}}\right) f' + A_0(z) \exp\left(\frac{a_2}{(1-z)^{a_1}}\right) f = 0,$$

where A_1, A_0 are analytic in $\mathbb{D} \cup \{z \in \mathbb{C} : |z-1| < \varepsilon\}$, for some $0 < \varepsilon < \infty$, and a_j is a non-zero complex constant for $j = 1, 2, 3, 4$.

An integration method proves to be an efficient tool, when all solutions of (1.1) or their derivatives are forced in $H_\omega^\infty(D)$ by giving a sufficient condition on the coefficients A_j . This kind of conditions have earlier been given by Gröhn, Heittokangas, Korhonen and Rättyä in [26, 38–40] by using Picard's successive approximations and integral estimates based on Gronwall's lemma or Herold's comparison theorem. In particular, our elementary integration method gives sharp results for the second order equation

$$f'' + Af = 0, \quad (1.3)$$

where A is analytic in \mathbb{D} . Moreover, it yields in \mathbb{C} a classical relation analogous to (1.2).

An operator theoretic approach, originating from Pommeraike [57], is based on the fact that if $X \subset \mathcal{H}(\mathbb{D})$ is an admissible normed space, f is a solution of (1.3) and

$$S_A(f)(z) = - \int_0^z \left(\int_0^\zeta f(w)A(w)dw \right) d\zeta,$$

with an operator norm $\|S_A\|_{X \rightarrow X} < 1$, then

$$f(z) = S_A(f)(z) + f'(0)z + f(0) \quad \text{and} \quad \|f\|_X \leq \frac{C(f)}{1 - \|S_A\|_{X \rightarrow X}} < \infty.$$

Here X is some function space such as H^∞ , BMOA or the Bloch space. This approach is implicitly behind the integration method.

Finally, we consider the analogue of the Hardy-Stein-Spencer formula of Hardy spaces for the higher order derivatives. This analogue, combined with the operator theoretic approach, gives information about the case when all solutions of (1.3) belong to H^p . Moreover, we study the zero separation of solutions of the equation

$$f''' + A_2 f'' + A_1 f' + A_0 f = 0$$

by using localization and a known integral estimate. Zeros of solutions of differential equations of order $k \geq 3$ are hard to study due to lack of sufficient tools. Nevertheless, the geometrical distribution of zeros of solutions, the growth of the coefficients and the growth of solutions are fundamental aspects to consider when (1.1) is satisfied.

The remainder of this survey is organized as follows. In Section 2, we discuss complex ODEs in general and consider means to measure the growth of their solutions and coefficients. In Section 3, we discuss certain function spaces and the zero separation results for solutions of (1.3). In Section 4, we first describe the general outline of localization and then discuss pseudo-hyperbolic discs, which are an important localization domain. Second, we describe some integral estimates, which precede our integration method. Third, we describe the operator theoretic approach applied in Paper III. Finally, in Section 5 the essential contents of Papers I-III are summarized.

2 Differential equations and growth of solutions

In this section, we discuss certain facts about differential equations and present some means to measure the growth of their coefficients and solutions.

We discuss the analyticity of solutions of (1.1) and claim that certain rates of growth for the coefficients A_j could be peculiarly interesting. Moreover, we define a general growth space and discuss some norm equivalences.

1. define the iterated order of growth $\sigma_{M,n}(f)$, which asymptotically measures the growth of the maximum modulus function $M(r, f) = \max_{|z|=r} |f(z)|$, of an analytic function f . The meaning of the number $\sigma_{M,n}(f)$ is discussed by comparing it to certain quantities which are present in Nevanlinna and Wiman-Valiron theories, on which we take a brief look. Then, we present results which utilize $\sigma_{M,n}$ to relate the growth of solutions of (1.1) to the growth of the coefficients A_j .

We present some of Hamouda's results on differential equations with coefficients of a particular form. These equations are considered in Paper I, where their analysis is made straightforward by the localization method for linear ODEs.

2.1 OBSERVATIONS RELATED TO DIFFERENTIAL EQUATIONS

19 Consider a complex differential equation of order $k \in \mathbb{N}$ in a domain $D \subset \mathbb{C}$. If D is simply connected, the coefficients are analytic in D and the equation is linear, then it is well-known that all solutions are analytic. If any of these assumptions are removed, the analyticity of solutions can be lost. First, the fact that D is simply connected is seen to be necessary. For example, the coefficient $1/z$ of the linear equation

$$f'' + \frac{10}{z} f' = 0$$

is analytic in the annulus $D = \{z \in \mathbb{C} : \frac{1}{2} < |z| < 1\}$, but one solution of this equation is $\log(z)$, which is not analytic in D . Second, if the coefficients are not analytic, then the solutions need not to be even meromorphic. For example, the linear equation

$$f'' + \frac{1}{z^2} f' - \frac{2}{z^3} f = 0$$

81 has the solution $f(z) = \exp(1/z)$, which is not meromorphic in any neighbourhood of the essential singularity $z = 0$. Third, the function $\log(z)$ is a solution of the non-linear equation

$$f'' + (f')^2 = 0,$$

whose coefficients are analytic in \mathbb{D} . Here $\mathbb{D} = \{z \in \mathbb{C} : |z| < 1\}$ is the unit disc of the complex plane and $\mathbb{T} = \partial\mathbb{D}$ is its boundary.

2 Due to these notions, it is reasonable to restrict the study to linear differential equations with coefficients analytic in some simply connected domain.

While considering the equation

$$214 f^{(k)} + Af = 0,$$

the interesting growth rate for A is roughly

$$\|A\|_{H_k^\infty} = \sup_{z \in \mathbb{D}} |A(z)|(1-|z|)^k < \infty.$$

This is due to the fact that if $A \in H_{k+\varepsilon}^\infty \setminus H_{k-\varepsilon}^\infty$ then some solution is of exponential growth, but in the case $A \in H_{k-\varepsilon}^\infty$ all solutions are bounded [38, Corollary 3.16]. If $\|A\|_{H_2^\infty} < p(p+1)$, for $0 < p < \infty$, then all solutions of (1.3) belong to H_p^∞ , see [57, Example 1] and [43, Example 5]. Conversely, $\sup_{z \in \mathbb{D}} |A(z)|(1-|z|^2)^2 \leq 1$ and $\|A\|_{H_2^\infty} < \infty$ imply, respectively, that each solution of (1.3) has at most one zero, and that the zeros of each solution are separated in the hyperbolic metric, see [50] and [60, Theorems 3–4]. If

$$\sup_{z \in \mathbb{D}} |A(z)|(1-|z|)^2 \log \frac{e}{1-|z|} < 1,$$

then all solutions f belong to the Bloch space \mathcal{B} , which consists of $f \in \mathcal{H}(\mathbb{D})$ such that $\sup_{z \in \mathbb{D}} |f'(z)|(1-|z|^2) < \infty$ [43, Corollary 4 and Example 5].

2.2 GENERAL GROWTH SPACE

The general growth space $H_\omega^\infty(D)$ consists of functions f analytic in a simply connected domain $D \subset \mathbb{C}$, such that

$$\|f\|_{H_\omega^\infty(D)} = \sup_{z \in D} |f(z)|\omega(z) < \infty.$$

Here the function $\omega : D \rightarrow (0, \infty)$ is bounded and measurable, therefore integrable. If $D = \mathbb{D}$, we write $H_\omega^\infty = H_\omega^\infty(\mathbb{D})$. Moreover, if $\omega(z) = \omega(|z|)$ for all $z \in \mathbb{D}$, we call ω radial. If ω is a classical weight, that is, $\omega(z) = (1-|z|)^p$, for $p \in (0, \infty)$, we write $H_\omega^\infty = H_p^\infty$. Note that we put $|z|$ instead of the usual $|z|^2$ in the definition of ω ; hence, some calculations in Paper II will be simpler. A function f belongs to the Korenblum space

$$\mathcal{A}^{-\infty} = \bigcup_{0 < p < \infty} H_p^\infty$$

if and only if

$$\inf \{ \alpha \geq 0 : f \in H_\alpha^\infty \} = \limsup_{r \rightarrow 1^-} \frac{\log^+ M(r, f)}{-\log(1-r)} \quad (2.1)$$

is finite.

Some equivalent norms

The Fundamental Theorem of Calculus

$$f(z) = \int_0^z f'(\zeta) d\zeta + f(0), \quad z \in \mathbb{D}, \quad (2.2)$$

and the Cauchy Integral Formula

$$f^{(n)}(z) = \frac{n!}{2\pi i} \int_C \frac{f(\zeta)}{(\zeta - z)^{n+1}} d\zeta, \quad z \in \mathbb{D}, \quad n \in \mathbb{N},$$

express $f \in \mathcal{H}(\mathbb{D})$ by means of its derivative and vice versa. Here the integration paths are a linear segment from 0 to z and a simple closed curve C around z and contained in \mathbb{D} , respectively. By using these results, it can be seen that

$$\|f\|_{H_p^\infty} = \sup_{z \in \mathbb{D}} |f(z)|(1-|z|)^p \asymp \sup_{z \in \mathbb{D}} |f'(z)|(1-|z|)^{p+1} + |f(0)|, \quad (2.3)$$

for $f \in \mathcal{H}(\mathbb{D})$, where the constants depend on p . Here $A \asymp B$ is used to denote the fact that $C^{-1}B(r) \leq A(r) \leq CB(r)$ for some constant $0 < C < \infty$ as r varies. In addition, $A \lesssim B$ denotes the fact that the quotient $A(r)/B(r)$ is bounded from above. If $A(r)/B(r) \rightarrow 0$ as $r \rightarrow 1^-$, we write $A(r) = o(B(r))$.

After some simplification, [43, Lemmas 9 and 10] in Paper II imply

$$\|f\|_{H_p^\infty} \leq \frac{\Gamma(p)}{\Gamma(p+n)} \|f^{(n)}\|_{H_{p+n}^\infty} + \sum_{j=0}^{n-1} \frac{\Gamma(p)}{\Gamma(p+j)} |f^{(j)}(0)|, \quad (2.4)$$

and

$$\|f^{(n)}\|_{H_{p+n}^\infty} \leq e2^n (n+1)! \|f\|_{H_p^\infty}, \quad (2.5)$$

respectively, for $0 < p < \infty$ and $n \in \mathbb{N}$.

As (2.3) shows, in order to study the finiteness of $\sup_{z \in \mathbb{D}} |f'(z)|(1-|z|)^\alpha + |f(0)|$ for $f \in \mathcal{H}(\mathbb{D})$ and $1 < \alpha < \infty$ it is enough to consider $\sup_{z \in \mathbb{D}} |f(z)|(1-|z|)^{\alpha-1}$. However, for $0 < \alpha \leq 1$ it is necessary to study the derivative itself. The α -Bloch space \mathcal{B}^α , $\alpha \in (0, 1]$, consists of $g \in \mathcal{H}(\mathbb{D})$ such that

$$\|g\|_{\mathcal{B}^\alpha} = \sup_{z \in \mathbb{D}} |g'(z)|(1-|z|)^\alpha < \infty.$$

Here $\|g\|_{\mathcal{B}^\alpha}$ is a semi-norm, which can be made a norm simply by adding $|g(0)|$ to it. If $\alpha = 1$, then \mathcal{B}^α is the classical Bloch space \mathcal{B} . As a generalization of \mathcal{B}^α , we can consider the space of such functions $f \in \mathcal{H}(\mathbb{D})$ for which f' belongs to a general growth space H_ω^∞ for some ω .

For $p = 0$, inequalities (2.4) and (2.5) take the form

$$\sup_{z \in \mathbb{D}} |f(z) - f(0)| \left(\log \frac{1}{1-|z|} \right)^{-1} \leq \|f\|_{\mathcal{B}} \leq 2\|f\|_{H^\infty}, \quad (2.6)$$

where $\|f\|_{H^\infty} = \sup_{z \in \mathbb{D}} |f(z)|$. By inequality (2.6), we see that $H^\infty \subset \mathcal{B} \subset H_p^\infty$ for all $0 < p < \infty$, and $f(z) = \log((1+z)/(1-z))$ is an unbounded Bloch function with maximal growth. Inequality (2.6) shows also that each Bloch function is a Lipschitz map from (\mathbb{D}, d_H) to (\mathbb{C}, d_e) . In fact, the converse is also true. Here d_e denotes the Euclidean metric. Moreover,

$$d_H(z, w) = \frac{1}{2} \log \frac{1 + d_p(z, w)}{1 - d_p(z, w)}, \quad z, w \in \mathbb{D}, \quad (2.7)$$

is the hyperbolic metric defined by using the pseudo-hyperbolic metric

$$d_p(z, w) = |\varphi_z(w)| = \left| \frac{z-w}{1-\bar{z}w} \right|, \quad z, w \in \mathbb{D}.$$

2.3 ITERATED ORDER OF GROWTH OF SOLUTIONS

The iterated M -order of growth for $f \in \mathcal{H}(\mathbb{D})$ is defined as

$$\sigma_{M,n}(f) = \limsup_{r \rightarrow 1^-} \frac{\log_{n+1}^+ M(r, f)}{-\log(1-r)}, \quad n \in \mathbb{N} \cup \{0\}. \quad (2.8)$$

Here $\log_1^+ x = \log^+ x = \max\{\log x, 0\}$ for $x \in (0, \infty)$, $\log^+ 0 = 0$ and we set inductively $\log_{n+1}^+ x = \log^+(\log_n^+ x)$ for $n \in \mathbb{N}$. The function $\exp_n x$ is defined in an analogous way. If $n = 1$, we drop the index and write $\sigma_{M,1}(f) = \sigma_M(f)$, for example.

The number (2.8) equals to $\sigma_{M,0}(f)$, defined in (2.8). Clearly, if $f \in \mathcal{A}^{-\infty}$, then $\sigma_{M,1}(f) = 0$. However, the converse implication does not hold, as the example $f(z) = \exp(-(\log(1-z))^{-1})^\alpha$, $1 < \alpha < \infty$, shows.

The following if-and-only-if relation between the growth of coefficients of (1.1) and the growth of solutions was given in [37, Theorem 1.1].

Theorem 2.1. Let $n \in \mathbb{N}$, $\alpha \geq 0$ and $A_0, \dots, A_{k-1} \in \mathcal{H}(\mathbb{D})$. Then all solutions f of (1.1), satisfy $\sigma_{M,n+1}(f) \leq \alpha$ if and only if $\sigma_{M,n}(A_j) \leq \alpha$ for $j = 0, \dots, k-1$. Moreover, if $q \in \{0, \dots, k-1\}$ is the largest index for which $\sigma_{M,n}(A_q)$ is equal to $\max_{0 \leq j \leq k-1} \{\sigma_{M,n}(A_j)\}$, then there are at least $k - q$ linearly independent solutions f of (1.1) such that $\sigma_{M,n+1}(f) = \sigma_{M,n}(A_q)$.

Theorem 2.1 can be refined by means of the n -type, defined as

$$\tau_{M,n}(f) = \limsup_{r \rightarrow 1^-} (1-r)^{\sigma_{M,n}(f)} \log_n^+ M(r, f) \quad (2.9)$$

for $f \in \mathcal{H}(\mathbb{D})$ and $n \in \mathbb{N}$, when $0 < \sigma_{M,n}(f) < \infty$.

Theorem 2.2. [30, Theorem 3] Let $n \in \mathbb{N}$ and $A_0, \dots, A_{k-1} \in \mathcal{H}(\mathbb{D})$. Assume that $\sigma_{M,n}(A_j) \leq \sigma_{M,n}(A_0)$ for all $j = 1, \dots, k-1$, and

$$\max \{ \tau_{M,n}(A_j) : \sigma_{M,n}(A_j) = \sigma_{M,n}(A_0) \} < \tau_{M,n}(A_0).$$

Then each non-trivial solution f of (1.1) satisfies $\sigma_{M,n+1}(f) = \sigma_{M,n}(A_0)$.

Assume that for some $n \in \mathbb{N}$ both $\sigma_{M,n}(f)$ and $\tau_{M,n}(f)$ are positive and finite. In this case numbers n , $\sigma_{M,n}(f)$ and $\tau_{M,n}(f)$ describe how fast f grows. Namely, let $\{r_j\}_{j=1}^\infty$ be an increasing sequence of numbers in $(0, 1)$ along which the limes superior in (2.9) is attained. Then we have

$$\log_n^+ M(r_j, f) \sim \tau_{M,n}(f) \left(\frac{1}{1-r_j} \right)^{\sigma_{M,n}(f)}, \quad j \rightarrow \infty.$$

By exponentiating, we see that $M(r_j, f)$ grows asymptotically as

$$\exp_n \left(\tau_{M,n}(f) \left(\frac{1}{1-r_j} \right)^{\sigma_{M,n}(f)} \right).$$

This growth of $M(r, f)$ is attained in a larger set than just a sequence $\{r_j\}_{j=1}^\infty$, but we do not enter into this topic.

In the case of non-constant entire functions, the iterated M -order and type are defined as

$$\rho_k(f) = \limsup_{r \rightarrow \infty} \frac{\log_{k+1} M(r, f)}{\log r} \quad \text{and} \quad \tau_k(f) = \limsup_{r \rightarrow \infty} \frac{\log_k M(r, f)}{r^{\rho_k(f)},}$$

respectively for $k \in \mathbb{N}$. These definitions make sense also for $k = 0$; in this case, condition $0 < \rho_0(f) < \infty$ implies that f is a polynomial and $\rho_0(f) = \deg(f)$.

Recall that the Nevanlinna characteristic function $T(r, f)$ is defined for a meromorphic function f as the sum of the proximity function

$$m(r, f) = \frac{1}{2\pi} \int_0^{2\pi} \log^+ |f(re^{i\theta})| d\theta,$$

and the counting function

$$N(r, f) = \int_0^r \frac{n(t, f) - n(0, f)}{t} dt + n(0, f) \log r,$$

for $0 < r < \infty$ [48]. Here $n(r, f)$ is the number of poles of f in the disc $|z| \leq r$. Hence, $T(r, f) = m(r, f) + N(r, f)$ for an entire function.

For $f(z) = \sum_{n=0}^{\infty} a_n z^n \in \mathcal{H}(\mathbb{D})$ the number $\sigma_M(f)$ describes the growth of $M(r, f)$ by definition. In addition, it describes the growth of $T(r, f)$, maximal term

$$\mu(r, f) = \max_{n \geq 0} |a_n| r^n,$$

and central index

$$\nu(r, f) = \max \{k \geq 0 : |a_k| r^k = \mu(r, f)\}$$

of f . Indeed, replace $\log^+ M$ in the definition of $\sigma_M(f)$ by T , $\log^+ \mu$ or ν , to obtain the quantities $\sigma_T(f)$, $\sigma_\mu(f)$, $\sigma_\nu(f)$. Then

$$\sigma_M(f) = \sigma_\mu(f) = \max(0, \sigma_\nu(f) - 1),$$

by [45, pp. 43–45], and

$$\lambda(f) \leq \sigma_T(f) \leq \sigma_M(f) \leq \sigma_T(f) + 1. \quad (2.10)$$

Here $\lambda(f)$ is the exponent of convergence of the zeros $\{z_n\}$ of f , that is, the infimum of $\alpha > 0$ satisfying

$$\sum_{n=1}^{\infty} (1 - |z_n|)^{\alpha+1} < \infty. \quad (2.11)$$

First inequality in (2.10) is due to [63, Theorem V.11]. Last two inequalities in (2.10) follow from [48, Proposition 2.2.2], according to which

$$T(r, f) \leq \log M(r, f) \leq \frac{R+r}{R-r} T(R, f), \quad 0 < r < R < \infty,$$

which implies also that $\sigma_{T,n}(f) = \sigma_{M,n}(f)$ for $n \geq 2$.

Tools for differential equations

The proof of Theorem 2.1 relies on Nevanlinna theory combined with order reduction method. In general, Nevanlinna theory is an important tool in the study of differential equations [48]. One useful fact is that the function $m(r, f^{(j)}/f)$ grows slower than $m(r, f)$, which is made precise in the next lemma [34, Lemma 1.1.3].

Theorem 2.3 (Lemma on the generalized logarithmic derivative). *Let f be a transcendental meromorphic function in D . Then $m(r, f^{(k)}/f) = S(r, f)$ as $r \rightarrow 1^-$. If $\sigma_T(f) < \infty$ then $m(r, f^{(k)}/f) = O(-\log(1-r))$.*

In Theorem 2.3, $S(r, f)$ denotes a quantity satisfying

$$S(r, f) \lesssim \log^+ T(r, f) + \log \frac{1}{1-r} \quad (2.12)$$

as $r \rightarrow 1^-$ outside a possible exceptional set $E \subset [0, 1)$ of finite logarithmic measure

$$\int_E \frac{1}{1-r} dr < \infty.$$

Theorem 2.3 is not delicate enough for meromorphic functions which grow slowly in the sense of $\log^+ T(r, f) \lesssim (-\log(1-r))$, due to the second term in (2.12).

To give a straightforward application of Theorem 2.3, note that (1.1) implies

$$|A_0| \leq \sum_{j=1}^{k-1} |A_j| \left| \frac{f^{(j)}}{f} + \frac{f^{(k)}}{f} \right|,$$

and by the properties of \log^+ , we obtain

$$m(r, A_0) \leq \log^+ k + \sum_{j=1}^{k-1} m(r, A_j) + \sum_{j=1}^k m\left(r, \frac{f^{(j)}}{f}\right).$$

Hence, if A_0 grows faster than A_1, \dots, A_{k-1} , then all solutions must grow fast. For example, if there does not exist $C \in (0, \infty)$ such that

$$m(r, A_0) - \sum_{j=1}^{k-1} m(r, A_j) \leq C \log \frac{e}{1-r}, \quad r \rightarrow 1^-,$$

then $\sigma_T(f) = \infty$ by Theorem 2.3.

Wiman-Valiron theory is based on the use of functions $\mu(r, f)$ and $\nu(r, f)$ defined in Section 2.3 [44, 48]. For Wiman-Valiron theory in the unit disc, see [18] by Fenton and Rossi, for example. As Rossi mentioned in a talk¹, Wiman-Valiron theory tries to answer the question: "How much of the power series of an analytic function can we throw away and still get a good estimate near maximum modulus points?" If f is entire, then a key inequality is

$$\frac{|a_{k+N}|r^{k+N}}{\mu(r, f)} \leq \exp\left(-\frac{1}{2}b(|k|+N)k^2\right), \quad (2.13)$$

¹The 2015 work shop on "Complex Differential Equations and Value Distribution Theory" in Joensuu, Finland

24

which holds for r outside a set of finite logarithmic measure. Here $N = \nu(r, f)$ and b is a certain decreasing function, see [31, Theorem 2]. Inequality (2.13) implies that the terms $|a_{k+N}|r^{k+N}$ are small when compared to $|a_N|r^N$ for large k . In the proof of (2.13), the sequences $|a_n|$ and r^n are elaborately compared to certain well-chosen sequences α_n and ρ_n of positive numbers.

Moreover, for an entire function f , an estimate

$$M(r, f) < (1 + \varepsilon)\mu(r, f) \left(\frac{2\pi}{b(N)} \right)^{1/2}$$

holds for certain r large enough, see [31, Theorem 5] for details.

Wiman-Valiron theory has been developed also for the unit disc. We mention two key results: in the cases $\sigma_M(f) > 0$ and $\sigma_M(f) = 0$, respectively,

$$f^{(q)}(z) = (1 + o(1)) \left(\frac{\nu(|\zeta|, f)}{\zeta} \right)^q f(z), \quad |\zeta| \rightarrow 1^-, \quad (2.14)$$

and

$$\frac{f^{(q)}(\zeta)}{f(\zeta)} \lesssim \left(\frac{1}{1 - |\zeta|} \right)^{q+\eta}, \quad |\zeta| \rightarrow 1^-, \quad (2.15)$$

for $q \in \mathbb{N}$, $\eta > 0$, provided that $|f(\zeta)|$ is large enough, see [18] for details. For a monomial $f(z) = z^N$ the power series is just one term and equation (2.14) reads

$$f^{(q)}(z) = \frac{N(N-1) \cdots (N-q+1)}{z^q} f(z).$$

Condition (2.15) suggests that $|f^{(q)}(z)|(1 - |z|)^q$ would behave like $|f(z)|$ near the maximum modulus points of f .

2.4 EQUATIONS WITH COEFFICIENTS OF A PARTICULAR FORM

151

We consider the order of growth of solutions of differential equations, whose coefficients have a particular form. In the plane, the equation

$$f'' + A(z)e^{az}f' + B(z)e^{bz}f = 0 \quad (2.16)$$

where A and B are entire functions with order less than 1 and $a, b \in \mathbb{C}$ has been studied, for example, in [5, 9, 10]. Since the coefficients of (2.16) are transcendental, some solutions of (2.16) must be of infinite order by classical theorems of Frei and Wittich, see [19, 64], for example. This leads to asking what conditions on the coefficients will guarantee that all solutions are of infinite order? This happens, for example, if $ab \neq 0$ and $\arg(a) \neq \arg(b)$ or $a/b \in (0, 1)$ [9, Theorem 2].

Equation (2.16) gave the inspiration for [29], which some particular differential equations in \mathbb{D} were studied by techniques inherited from the plane case and analogous to those used in [9]. As Hamouda [29] refers, [11, 24, 37, 46] are based on the dominance of some coefficient.

In the unit disc, we may consider the equation

$$f'' + A_1(z) \exp\left(\frac{b_1}{(1-z)^{q_1}}\right) f' + A_0(z) \exp\left(\frac{b_0}{(1-z)^{q_0}}\right) f = 0, \quad (2.17)$$

where $A_1, A_0 \in \mathcal{H}(\mathbb{D} \cup \{|z-1| < \varepsilon\})$ for some $\varepsilon > 0$, b_1, b_0, q_1, q_0 are non-zero complex numbers, $A_0 \neq 0$ and $\operatorname{Re}(q_0) > 0$. We define the power z^p by taking the principal branch, when z belongs to a simply connected domain $D \subset \mathbb{C} \setminus \{0\}$ and $p \in \mathbb{C} \setminus \mathbb{Z}$. Analogously as for (2.16), since the coefficients of (2.17) are not in the Korenblum space, some solutions of (2.17) must be of infinite order.

The next theorems consider special cases of equation (2.17). In Paper II, we consider more general cases.

Theorem 2.1. [29, Theorem 1.6] Let $q_0 = q_1 > 1$ and $b_1 = 0 \neq b_0$ in (2.17). Then every non-trivial solution of (2.17) is of infinite order.

Theorem 2.2. [29, Theorem 1.8] Let $q_0 = q_1 > 1$, $b_0, b_1 \neq 0$ and $\arg b_0 \neq \arg b_1$ in (2.17). Then every non-trivial solution of (2.17) is of infinite order.

We have simplified the statements of Theorems 2.1–2.3 without loss of generality. It is enough to consider the term $(1-z)^\mu$ in equation (2.17) instead of the more general $(z_0 - z)^\mu$ as the change of variable $z \mapsto z_0 z$ shows.

We can also consider the higher order equation

$$f^{(k)} + \sum_{j=0}^{k-1} A_j(z) \exp_{n_j} \left(\frac{b_j}{(1-z)^{q_j}} \right) f^{(j)} = A_k(z) \exp_{n_k} \left(\frac{b_k}{(1-z)^{q_k}} \right), \quad (2.18)$$

where $k \in \mathbb{N}$, $A_j \in \mathcal{H}(\mathbb{D} \cup \{|z-1| < \varepsilon\})$ for some $\varepsilon > 0$, $q, q_k \in \mathbb{C} \setminus \{0\}$, $n_j \in \mathbb{N}$, and $b_j \in \mathbb{C}$ for $j = 0, 1, \dots, k$. The next theorem considers a special case.

Theorem 2.3. [29, Theorem 1.11] Let $A_k \equiv 0$, $q > 1$ and $n_j = 1$ all $j = 0, 1, \dots, k-1$ in (2.18). Moreover, let $b_0 \neq 0$ and assume that $b_j/b_0 \in [0, 1)$ for $j = 1, \dots, k-1$ with at most one exception $b_j = b_m$ for which $\arg(b_m) \neq \arg(b_0)$. Then every non-trivial solution is of infinite order.

The next theorem considers equation (1.1) without assuming a special form for the coefficients A_j .

Theorem 2.4. [30, Theorem 2] Let $A_0, \dots, A_{k-1} \in \mathcal{H}(\mathbb{D})$. If there exists $\omega_0 \in \mathbb{T}$ and a curve $\gamma \subset \mathbb{D}$ tending to ω_0 such that

$$\lim_{\substack{z \rightarrow \omega \\ z \in \gamma}} \frac{\sum_{j=1}^{k-1} |A_j(z)| + 1}{|A_0(z)|} \exp_n \left(\frac{\lambda}{(1-|z|)^\mu} \right) = 0,$$

where $n \geq 1$ is an integer, and $\lambda > 0$ and $\mu > 0$ are real constants, then every non-trivial solution f of (1.1) satisfies $\sigma_{M,n}(f) = \infty$, and furthermore $\sigma_{M,n+1}(f) \geq \mu$.

Theorem 2.4 implies Theorem 2.2. Theorems 2.1 and 2.2 can be obtained in a straightforward manner from Theorem 2.1 by localization, as we show in Paper I. Localization is a general method, which has been used for example in [20, 22].

3 Function spaces and zero separation of solutions

In this section, we define the classical Hardy space H^p and its subspace BMOA. We discuss some equivalent norms and define the Q_K spaces, which for certain K coincide with \mathcal{B} , BMOA or the classical Dirichlet space. We present some sufficient conditions, found by Li and Wulan [49], for the coefficients A_j , which place the solutions of (1.1) in Q_K . The presented results should be valid under weaker assumptions. This was shown to be true in Paper II by using a method based on integration.

Next, we briefly discuss brief results on separation of zeros and critical points (zeros of the first derivative) of solutions of the second order equation (1.3). Paper III contains a result on the zero separation of higher order differential equations. Finally, we state some facts about the relation of univalent functions to the oscillation theory and function spaces.

3.1 HARDY AND Q_K SPACES

Hardy spaces

The Hardy space H^p , $0 < p < \infty$, consists of $f \in \mathcal{H}(\mathbb{D})$ for which

$$\|f\|_{H^p}^p = \sup_{0 \leq r < 1} \frac{1}{2\pi} \int_0^{2\pi} |f(re^{i\theta})|^p d\theta < \infty. \quad (3.1)$$

The integral in (3.1), denoted by $M_p^p(r, f)$, is an increasing function of r . Note that, for $f \in \mathcal{H}(\mathbb{D})$ and $0 \leq r < 1$ fixed, $M_p(r, f) \rightarrow M(r, f)$ as $p \rightarrow \infty$. For fundamental facts about Hardy spaces, see [15].

The space H^∞ consists of bounded analytic functions in \mathbb{D} . In addition, the Nevanlinna class N consists of those functions f meromorphic in \mathbb{D} for which $T(r, f)$ remains bounded as $r \rightarrow 1^-$. Since $\log^+ x \leq p^{-1}x^p$ for $0 < p < \infty$, we have $H^p \subset N$ for $0 < p \leq \infty$. In fact, the class N consists of quotients f/g , where $f, g \in H^\infty$ and $g \not\equiv 0$. For $f \in N$, the radial limit $f(e^{i\theta}) = \lim_{r \rightarrow 1^-} f(re^{i\theta})$ exists almost everywhere and we have $\|f\|_{H^p} = M_p(1, f)$ for $f \in \mathcal{H}(\mathbb{D})$.

The zeros of functions in N are neatly characterized: a sequence $\{z_n\} \subset \mathbb{D}$ is the zero sequence of some $f \in N$ if and only if (2.11) holds for $\alpha = 0$, that is, $\{z_n\}$ is a Blaschke sequence.

The Hardy-Stein-Spencer formula

$$\|f\|_{H^p}^p = |f(0)|^p + \frac{p^2}{2} \int_{\mathbb{D}} |f(z)|^{p-2} |f'(z)|^2 \log \frac{1}{|z|} dm(z), \quad (3.2)$$

that holds for $0 < p < \infty$ and $f \in \mathcal{H}(\mathbb{D})$, expresses $\|f\|_{H^p}$ as an area integral. Here, let $dm(z) = \frac{1}{\pi} dx dy$ be the normalized Lebesgue measure. Identity (3.2) is a corollary of Green's theorem. It can also be obtained from [32, Theorem 3.1] by integration. In Paper III, we are interested whether or not we can replace the term $|f'(z)|$ with the quantity $|f''(z)|(1 - |z|^2)$ in (3.2).

If $f \in H^1$, then the Cauchy integral formula takes the form

$$f(z) = \frac{1}{2\pi} \int_0^{2\pi} \frac{f(e^{it})}{1 - e^{-it}z} dt = \int_{\mathbb{T}} \frac{d\mu(\zeta)}{1 - \bar{\zeta}z}, \quad z \in \mathbb{D}, \quad (3.3)$$

where $d\mu(\zeta) = f(\zeta)(2\pi i\zeta)^{-1} d\zeta$ [181, Theorem 3.6]. If in general, μ is a finite complex Borel measure on \mathbb{T} , then the right-hand-side of (3.3) is the Cauchy transform of μ , denoted by $\mathcal{K}\mu$ [13]. The space of Cauchy transforms is normed by

$$\|f\|_{\mathcal{K}} = \inf \left\{ \sup \sum_{j=1}^{\infty} |\mu(E_j)| : \mathcal{K}\mu = f, \quad \bigcup_{j=1}^{\infty} E_j = \mathbb{T} \right\}.$$

In the definition, all representing measures μ of f are considered. The total variation of μ is defined by using the partitions $\{E_j\}$ of \mathbb{T} . The norm $\|f\|_{\mathcal{K}}$ is the infimum of these total variations. For more information, see Chapter 6 of [58].

The space BMOA consists of those functions in the Hardy space H^2 whose boundary values are of bounded mean oscillation and has the seminorm

$$\|f\|_{\text{BMOA}}^2 = \sup_{a \in \mathbb{D}} \|f_a\|_{H^2}^2,$$

where $f_a(z) = f(\varphi_a(z)) - f(a)$ and $\varphi_a(z) = \frac{a-z}{1-\bar{a}z}$ is the automorphism of the unit disc. Since $\|f_a\|_{H^2} = M_2(1) \geq M_2(0, f_a) = |f'(a)|(1 - |a|^2)$ for all $a \in \mathbb{D}$, we deduce $\text{BMOA} \subset \mathcal{B}$ with $\|f\|_{\mathcal{B}} \leq \|f\|_{\text{BMOA}}$ for $f \in \mathcal{H}(\mathbb{D})$. By (3.2), with $p = 2$, and [21, pp. 228–230], we obtain

$$\|f\|_{\text{BMOA}}^2 \asymp \sup_{a \in \mathbb{D}} \int_{\mathbb{D}} |f'(z)|^2 (1 - |\varphi_a(z)|^2) dm(z)$$

for $f \in \mathcal{H}(\mathbb{D})$.

Some results which place solutions of differential equations in Hardy spaces are discussed in the end of Section 4.3 and in Paper III.

Solutions in Q_K spaces

Let Q_K be the space of functions $f \in \mathcal{H}(\mathbb{D})$ such that

$$\sup_{a \in \mathbb{D}} \int_{\mathbb{D}} |f'(z)|^2 K(g(z, a)) dm(z) < \infty, \quad (3.4)$$

where $K : [0, \infty) \rightarrow [0, \infty)$ is nondecreasing, $g(z, w) = \log \left| \frac{1-\bar{w}z}{w-z} \right|$ is Green's function and $dm(z)$ is the Lebesgue area measure. For example, $Q_K = \text{BMOA}$ if $K(r) = r$, by the Hardy-Stein-Spencer formula (3.2).

If K grows fast, such that $\int_1^{\infty} K(r)e^{-2r} dr = \infty$, then condition (3.4) forces f' to vanish identically and Q_K contains only constant functions. If this is not the case, then Q_K contains the Dirichlet space \mathcal{D} , which consists of $f \in \mathcal{H}(\mathbb{D})$ for which

$$\int_{\mathbb{D}} |f'(z)|^2 dm(z),$$

the area of $f(\mathbb{D})$ counting multiplicities, is finite. In particular, $\mathcal{B}^{\alpha} \subset \mathcal{D} \subset Q_K$ for parameters $0 < \alpha < 1/2$.

If $K(r) \not\rightarrow 0$ as $r \rightarrow 0$, then $Q_K = \mathcal{D}$. However, for $\alpha \in [\frac{1}{2}, 1]$ the condition

$$\int_0^1 \frac{K(-\log r)}{(1-r)^{2\alpha}} r dr < \infty$$

is equivalent to $\mathcal{B}^\alpha \subset Q_K$. If $K(r) = r^p$ for $p \in (0, \infty)$, then Q_K is the classical Q_p space. See [17] for the proof, the above mentioned facts and more.

In [49], the authors gave sufficient conditions for the analytic coefficients of (1.1) such that the solutions all belong to Q_K . The proofs involve Carleson measures, which are defined in Section 4.3.

Theorem 3.1. [49, Theorem 2.4] Let $A(z) = \sum_{n=0}^{\infty} a_n z^n$, $a_n \in \mathbb{C}$. If $|a_n| \leq 1$ for all $n \in \mathbb{N} \cup \{0\}$, then all solutions of (1.3) belong to the Dirichlet space.

Theorem 3.1 was generalized for the higher-order equation (1.1) by Xiao:

Theorem 3.2. [65, Theorem 1.12] Let $A_j(z) = \sum_{n=0}^{\infty} a_{j,n} z^n \in \mathcal{H}(\mathbb{D})$, $a_{j,n} \in \mathbb{C}$. If $|a_{j,n}| \leq (n+2)^{k-2-j}$ for all $j = 0, \dots, k-1$, $n \in \mathbb{N} \cup \{0\}$, then all solutions of (1.3) belong to the Dirichlet space.

In Paper II, it was shown that Theorem 3.1 is not sharp. Namely, for $0 < \alpha < 1/2$, there exists a condition on the Maclaurin coefficients a_k , such that the assertion of Theorem 3.1 follows even though $|a_k| \asymp k^\alpha \rightarrow \infty$ as $k \rightarrow \infty$, see [43, Corollary 8(a)] and the discussion after that.

Theorem 3.3. [49, Theorem 2.1] Let $1 < c < 3/2$ and let K satisfy

$$\int_1^{\infty} \left(\sup_{0 \leq t \leq 1} \frac{K(st)}{K(t)} \right) s^{1-2c} ds < \infty. \quad (3.5)$$

Then there exists constant $\alpha = \alpha(n, c, K) > 0$ such that if the coefficients A_j of (1.1) satisfy $\|A_j\|_{H_{n-j}^{\infty}} \leq \alpha$, $j = 1, \dots, n-1$, and $\|A_0\|_{H_{n-c}^{\infty}} \leq \alpha$, then all solutions of (1.1) belong to Q_K .

Theorem 3.4. [49, Theorem 2.6] Let (3.5) be satisfied with $c = 1$. Then there exists a constant $\beta = \beta(n, K) > 0$ such that if $\|A_j\|_{H_{n-j}^{\infty}} \leq \beta$, for all $j = 1, \dots, n-1$, and $\|A_0\|_{H_{n-1}^{\infty}} \leq \beta$, then all solutions of (1.1) belong to Q_K .

It seems reasonable that Theorem 3.3 holds when the condition $\|A_0\|_{H_{n-c}^{\infty}} \leq \alpha$ is replaced by $\|A_0\|_{H_n^{\infty}} \leq \alpha$. Similarly, Theorem 3.4 should hold when $\|A_0\|_{H_{n-1}^{\infty}} \leq \beta$ is replaced by $\|A_0\|_{H_n^{\infty}} \leq \beta$. The heuristic principle behind these predictions is stated as follows:

Remark 1. Conditions (2.15), (2.3) and condition [59, p. 787] give the vague idea the term $|f^{(j)}(z)|$ grows roughly as $|f^{(k)}(z)|(1-|z|^2)^{k-j}$. If we want the terms $f^{(k)}$ and $A_{k-1}f^{(k-1)}, \dots, A_0f$ in equation (1.1) to have equal growth, $|A_j(z)|$ should grow roughly as $(1-|z|^2)^{j-k}$. In this case, none of the terms $A_{k-1}f^{(k-1)}, \dots, A_0f$ and $f^{(k)}$, could be immediately neglected while considering (1.1).

3.2 SEPARATION OF ZEROS AND CRITICAL POINTS

For a non-constant $f \in \mathcal{H}(\mathbb{D})$ the zeros do not have an accumulation point inside of \mathbb{D} . Moreover, the subset of \mathbb{T} , where the boundary function $f(e^{i\theta})$ exists and vanishes, cannot be an arc on \mathbb{T} due to the Schwarz reflection principle and cannot have a positive measure by Privalov's theorem. These observations hold for the critical points of f as well.

If f and g are linearly independent solutions of

$$f'' + Af = 0, \quad (3.6)$$

where $A \in \mathcal{H}(\mathbb{D})$, then the Wronskian determinant $W(f, g) = fg' - f'g$ is a non-zero constant. Consequently, the zeros of each solution of (3.6) are simple and the zeros (resp. critical points) of two different solutions are distinct, since $|f(z)| + |g(z)|$ and $|f'(z)| + |g'(z)|$ are non-vanishing. In contrast to these observations, note that it is not clear how often $|f(z)| + |g'(z)|$ can vanish.

The zeros of any non-trivial solution of (3.6) are simple. Analogously, the zeros of any non-trivial solution of the k th order differential equation (1.1) are at most of order $k - 1$.

If f is a non-trivial solution of (3.6), the separation of its zeros and critical points is of interest. If $\psi : [0, 1) \rightarrow (0, 1)$ is a non-decreasing function such that

$$K = \sup_{0 \leq r < 1} \frac{\psi(r)}{\psi\left(\frac{r+\psi(r)}{1+r\psi(r)}\right)} < \infty,$$

and A is an analytic function satisfying

$$\sup_{z \in \mathbb{D}} |A(z)| \left(\psi(|z|)(1 - |z|^2) \right)^2 = M < \infty,$$

then any two distinct zeros $\zeta_1, \zeta_2 \in \mathbb{D}$ of any non-trivial solution of (5.17) are separated in the hyperbolic metric by

$$d_H(\zeta_1, \zeta_2) \geq \log \frac{1 + \psi(|t_h(\zeta_1, \zeta_2)|) / \max\{K\sqrt{M}, 1\}}{1 - \psi(|t_h(\zeta_1, \zeta_2)|) / \max\{K\sqrt{M}, 1\}},$$

see [12, Theorem 11]. Here d_H is the hyperbolic metric defined in (2.7), and $t_h(\zeta_1, \zeta_2)$ denotes the hyperbolic midpoint of ζ_1 and ζ_2 . In particular, if $A \in H_2^\infty$, then (2.7) takes the form

$$d_H(\zeta_1, \zeta_2) \geq \log \frac{1 + 1 / \max\{\sqrt{M}, 1\}}{1 - 1 / \max\{\sqrt{M}, 1\}},$$

since we may choose $\psi \equiv c$ for an arbitrary $0 < c < 1$. Hence, we obtain the result originally proved by Schwarz in [60, Theorems 3–4] that the zeros of each solution of (1.3) are separated in the hyperbolic metric if and only if $\|A\|_{H_2^\infty}$ is finite. This is equivalent to the existence of $\delta > 0$ such that each solution of (1.3) has at most one zero in each disc $\Delta(a, \delta)$ for $a \in \mathbb{D}$. Here

$$\Delta(a, \delta) = \left\{ z \in \mathbb{D} : \left| \varphi_a(z) \right| = \left| \frac{a - z}{1 - \bar{a}z} \right| < \delta \right\}$$

3

is a *pseudo-hyperbolic disc* with center $a \in \mathbb{D}$ and radius $0 \leq \delta \leq 1$.

Zeros and critical points are hyperbolically separated from each other. Let ψ , K and M be as above. If f is a non-trivial solution of (5.17), and $f(z) = f'(a) = 0$ for some $z, a \in \mathbb{D}$, then

$$d_H(z, a) \geq \frac{1}{2} \log \frac{1 + \psi(|a|) / \max\{K\sqrt{2M}, 1\}}{1 - \psi(|a|) / \max\{K\sqrt{2M}, 1\}}$$

see [26, Theorem 1]. This implies the classical result of Taam [41, Theorem 8.2.2]: if we have $A \in \mathcal{H}^\infty$, then the hyperbolic distance between any zero and any critical point of any non-trivial solution of (5.17) is uniformly bounded away from zero.

In comparison to the case of two zeros, or a zero and a critical point, the critical points can have an arbitrary multiplicity and they do not have to be separated, see [26, Example 1].

In addition to hyperbolic separation, we define another concept: a sequence $\{z_n\}_{n=1}^\infty$ in \mathbb{D} is *uniformly separated* if

$$\inf_{k \in \mathbb{N}} \prod_{n \in \mathbb{N} \setminus \{k\}} \left| \frac{z_n - z_k}{1 - \bar{z}_n z_k} \right| > 0.$$

The next example is originally due to Hille [41, p. 552]. The example is discussed also in [60, p. 162] and in [35, Example 11].

Example 3.1. Let $\gamma > 0$ and $A(z) = (1 + 4\gamma^2)/(1 - z^2)^2$, $z \in \mathbb{D}$. Then the functions

$$f_j(z) = \sqrt{1 - z^2} \exp\left((-1)^j \gamma i \log \frac{1+z}{1-z}\right), \quad j = 1, 2.$$

are linearly independent solutions of (5.17). Each f_j , $j = 1, 2$, is bounded and has no zeros. However, the bounded function

$$f(z) = f_2(z) - f_1(z) = 2i\sqrt{1 - z^2} \sin\left(\gamma \log \frac{1+z}{1-z}\right), \quad z \in \mathbb{D},$$

has infinitely many zeros. The zeros of f are simple and real, and moreover, the hyperbolic distance between two consecutive zeros is precisely $\delta_\gamma = \pi/(2\gamma)$. If, for example, $g(z) = f_2(z) + f_1(z)$, then the Wronskian $W(f, g) = fg' - gf' = 8i\gamma$. Note that, if $\gamma \rightarrow \infty$ then $\|A\|_{H_2^\infty} \rightarrow \infty$, $|W(f, g)| \rightarrow \infty$ and $\|f_j\|_{H^\infty} \rightarrow \infty$, $j = 1, 2$, whereas the separation constant $\delta_\gamma \rightarrow 0$.

The aforementioned results are related to the second order equation (3.6). The analysis of higher order equations is harder because there are not enough sufficient tools. Some progress was obtained, for example, by Kim and Lavie in the seventies and eighties. In Paper III, a new zero separation result is obtained.

It is well-known that if f and g are any linearly independent solutions of (1.3), then $2A = S(h)$, where $h = f/g$. Here

$$S(h) = \left(\frac{h''}{h'}\right)' - \frac{1}{2} \left(\frac{h''}{h'}\right)^2$$

is the Schwarzian derivative of a locally univalent function h and h''/h' is called the pre-Schwarzian derivative of h . Moreover, h is univalent in a set $\Omega \subset \mathbb{D}$ if and only

if each solution $c_1 f + c_2 g$ has at most one zero in Ω . Due to these two facts, the zeros of solutions of (1.117) and the univalence of h are closely related.

For a meromorphic function, let $\alpha(z) = (1 - |z|^2)$ and $\beta(z) = (1 - |z|^2)^2$. By Nehari's result [50], $\|A\|_{H_\beta^\infty} = 2\|S(h)\|_{H_\beta^\infty} \leq 2$ implies that h is univalent and equivalently each non-trivial solution of (1.3) has at most one zero. Indeed, also in the case when h is locally univalent and meromorphic, $\|S(h)\|_{H_\beta^\infty} \leq 1$ implies that h is univalent, see [55, Corollary 6.4]. If $h \in \mathcal{H}(\mathbb{D})$, then

$$\|S(h)\|_{H_\beta^\infty} \leq 4\|h''/h'\|_{H_\alpha^\infty} + \frac{1}{2}\|h''/h'\|_{H_\alpha^\infty}^2$$

89

by Cauchy's integral formula and

$$\|h''/h'\|_{H_\alpha^\infty} \leq 2 + 2\sqrt{1 + \frac{1}{2}\|S(h)\|_{H_\beta^\infty}}$$

by [54, p. 133]. Hence, h is univalent if $\|h''/h'\|_{H_\alpha^\infty}$ is sufficiently small. The best constant is due to Becker [6]: if $h \in \mathcal{H}(\mathbb{D})$ is locally univalent and

$$\sup_{z \in \mathbb{D}} \left| \frac{zh''(z)}{h'(z)} \right| (1 - |z|^2) \leq 1,$$

179

then h is univalent in \mathbb{D} .

Conversely, if $f \in \mathcal{H}(\mathbb{D})$ is univalent, then it satisfies the growth estimate

$$|f'(0)| \frac{|z|}{(1 + |z|)^2} \leq |f(z) - f(0)| \leq |f'(0)| \frac{|z|}{(1 - |z|)^2}$$

40

which implies $\|f\|_{H_2^\infty} \leq |f(0)| + |f'(0)|$. Moreover, converse Becker's condition $\|P(f)\|_{H_\alpha^\infty} \leq 6$ and Kraus' condition $\|S(f)\|_{H_\beta^\infty} \leq 6$ hold, see [55, p. 21] and [47, p. 23].

12

148

For a locally univalent meromorphic function h in \mathbb{D} , the quantity $\|S(h)\|_{H_\beta^\infty}$ is finite and only if h is uniformly locally univalent. Moreover, if $h \in \mathcal{H}(\mathbb{D})$, then this is equivalent to the finiteness of $\|h''/h'\|_{H_\alpha^\infty}$, see [66, Theorem 2].

Univalent functions are related to inclusions of function spaces. If $f \in \mathcal{H}(\mathbb{D})$ is univalent, then it is well-known that $f \in \mathcal{B}$ if and only if $f(\mathbb{D})$ does not contain arbitrarily large discs. Moreover, univalent functions in \mathcal{B} , BMOA and the spaces Q_p , for parameters $0 < p < \infty$, are the same. Each univalent function belongs to the Hardy space H^p for all $0 < p < 1/2$. For these facts and refinements, see [53] and the references therein.

4 Tools for the study of ODEs

177

In this section, we describe some methods, which are useful in the study of differential equations. We state the basic outline of localization, which leads to the localization method for linear ODEs in Paper I. Since a pseudo-hyperbolic disc is an important localization domain, the relationship of its center and radius to the Euclidean center and radius is discussed in detail.

We state some integral estimates for the maximum modulus function of a solution of (1.1). These growth estimates are related to Picard's iterations, Gronwall lemma and Herold's comparison theorem and have resemblance to the integration methods used in Paper II. However, the integration methods in Paper II are more elementary and straightforward.

We describe an operator theoretic approach, which is used in both Papers II and III. This method originates from Pommerenke's result [57, Theorem 2] and its improvement which are presented. A generalization of the Hardy-Stein-Spencer formula to higher order derivatives improves these results, see Section 5.3.1 in the summary of Paper III.

4.1 LOCALIZATION AND PSEUDO-HYPERBOLIC DISCS

A function $f \in \mathcal{H}(\mathbb{D})$ can be studied locally in a simply connected domain $\Omega \subset \mathbb{D}$ by localization: consider an analytic bijection $\phi: \mathbb{D} \rightarrow \Omega$ and then study $g = f \circ \phi$ in \mathbb{D} . By the Riemann mapping theorem, such a localization map ϕ always exists and is essentially unique. The domain Ω and the map ϕ have to be chosen in a suitable way so that ϕ preserves the properties of interest.

The most simple localization maps are the dilatation $z \mapsto rz$, $0 < r < 1$, the translation $z \mapsto a + (1 - |a|)z$, $a \in \mathbb{D} \setminus \{0\}$, and the automorphism $\varphi_a: \mathbb{D} \rightarrow \mathbb{D}$,

$$\varphi_a(z) = \frac{a - z}{1 - \bar{a}z},$$

for $a \in \mathbb{D}$. The composition $\phi(z) \mapsto \varphi_a(rz)$ of the automorphism and dilatation sends \mathbb{D} to a pseudo-hyperbolic disc $\Delta(a, r)$ and is important when considering the zero distribution of solutions of differential equations, see Paper III.

The Euclidean center and radius of a pseudo-hyperbolic disc

A pseudo-hyperbolic disc $\Delta(a, r)$, with center $a \in \mathbb{D}$ and radius $0 \leq r < 1$, consists of $z \in \mathbb{D}$, for which $|\varphi_a(z)| < r$. In fact, $\Delta(a, r)$ is a Euclidean disc with center and radius

$$C = \frac{1 - r^2}{1 - r^2|a|^2}a \quad \text{and} \quad S = \frac{1 - |a|^2}{1 - r^2|a|^2}r, \quad (4.1)$$

respectively [21, p. 3]. To see this by a direct calculation, let $|\varphi_a(z)| = r$ and, for simplicity, denote $A = (1 - r^2)/(1 - r^2|a|^2)$. Then

$$\frac{1 - r^2}{r^2} = \frac{(1 - |a|^2)(1 - |z|^2)}{|z - a|^2},$$

which implies

$$|z|^2 + |a|^2 - 2 \operatorname{Re}(a\bar{z}) = |z - a|^2 = \frac{r^2 - |a|^2 r^2}{1 - r^2} - \frac{r^2 - |a|^2 r^2}{1 - r^2} |z|^2.$$

By re-organizing terms, we obtain

$$\frac{|z|^2}{A} - 2 \operatorname{Re}(a\bar{z}) = \frac{r^2 - |a|^2}{1 - r^2}.$$

If we multiply both sides with A , the obtained equation yields

$$\begin{aligned} |z - Aa|^2 &= |z|^2 - 2 \operatorname{Re}(Aa\bar{z}) + |Aa|^2 = \frac{r^2 - |a|^2}{1 - |a|^2 r^2} + A^2 |a|^2 \\ &= \frac{(1 - |a|^2)^2}{(1 - |a|^2 r^2)^2} r^2, \end{aligned}$$

which implies (4.1).

Note that the permutation

$$(a, C, r, S) \mapsto (r, S, a, C) \quad (4.2)$$

is very useful in this context, since it transforms the formulas in (4.1) to each other.

Supplementary formulas for condition (4.1)

Next, we supplement (4.1) by expressing a number $x \in \{a, C, r, S\}$ in terms of two other numbers of the same set. In particular, S is given by formulas (4.7) and (4.9) below, and r is given in formulas (4.10)–(4.12). To obtain a formula for C or a , apply the 207 mutation (4.2).

Without loss of generality, let $a, r \in (0, 1)$ and let $\Delta(a, r) = D(C, S)$. Now, condition (4.1) implies

$$C \pm S = \frac{a \pm r}{1 \pm ra},$$

which gives $a \pm r = C \pm S \pm raC + raS$. Hence, we deduce the useful equations

$$a = C + raS \quad (4.3)$$

and

$$r = S + raC. \quad (4.4)$$

First, solve C from (4.4) and substitute to (4.3) to obtain

$$r = S(1 - a^2 r^2) + ra^2, \quad (4.5)$$

which implies

$$S = \frac{1 - a^2}{1 - a^2 r^2} r.$$

Second, solve r from (4.4) and substitute to (4.3) to obtain

$$a = C + \frac{aS^2}{1 - aC}, \quad (4.6)$$

which gives

$$S = \sqrt{\frac{(a-C)(1-aC)}{a}}. \quad (4.7)$$

Third, apply the permutation (4.2) to (4.6) to obtain

$$rS^2 - (1-r^2)S + (1-C^2)r = 0, \quad (4.8)$$

which gives

$$S = \frac{1-r^2}{2r} - \sqrt{\left(\frac{1-r^2}{2r}\right)^2 - (1-C^2)}. \quad (4.9)$$

Also, formulas for r can be obtained. Equation (4.8) yields

$$r = \frac{1+S^2-C^2}{2S} - \sqrt{\left(\frac{1+S^2-C^2}{2S}\right)^2 - 1}. \quad (4.10)$$

Apply the permutation (4.2) to (4.5) and solve for r to obtain

$$r = \sqrt{\frac{a-C}{a(1-aC)}}. \quad (4.11)$$

Finally, solve r from (4.5) to obtain

$$r = \sqrt{\left(\frac{1-a^2}{2Sa^2}\right)^2 + a^2} - \frac{1-a^2}{2Sa^2}. \quad (4.12)$$

4.2 INTEGRAL ESTIMATES

Research in [25] concerns the use of Picard iterations $f_{-1} \equiv 0$,

$$\begin{aligned} f_n(z) = & \sum_{j=0}^{k-1} \sum_{n=0}^j d_{j,n} \int_{z_0}^z (z-\zeta)^{k-j+n-1} A_j^{(n)}(\zeta) f_{n-1}(\zeta) d\zeta \\ & + \sum_{n=0}^{k-1} c_n (z-z_0)^n, \quad n \in \mathbb{N} \cup \{0\}, \end{aligned} \quad (4.13)$$

to study equation (1.1). Here the integration is done along the straight line segment from z_0 to z . The constants $d_{j,n}$ are given by

$$d_{j,n} = \frac{(-1)^n \binom{j}{n}}{(k-j+n-1)!}, \quad 0 \leq n \leq j \leq k-1,$$

and the constants $c_n \in \mathbb{C}$, which depend on the initial values of f at z_0 , are given by an inductive formula in [25]. See also [14], for an application of Picard iterations.

If the iterations f_n converge to an analytic function f , then (4.13) yields the representation formula [36, Theorem 3.1], which together with the classical Gronwall lemma [48, Lemma 5.10] implies Theorem 4.2.

5

Lemma 4.1. Let u and v be nonnegative integrable functions in $[1, t_0]$ and let $c > 0$ be a constant. If

$$u(t) \leq c + \int_1^t u(s)v(s) ds, \quad t \in [1, t_0],$$

then

$$u(t) \leq c \exp \left(\int_1^t v(s) ds \right), \quad t \in [1, t_0].$$

Theorem 4.2. [36, Theorem 4.1(a)] Let f be a solution of (1.1) where $A_j \in \mathcal{H}(\mathbb{D})$, for all $j = 0, \dots, k-1$. Then there exist a constant $C_1 = C_1(k) > 0$ depending on the initial values of f at the origin, and a constant $C_2 > 0$ depending on k , such that the following estimates hold:

(i) Function f satisfies

$$M(r, f) \leq C_1 \exp \left(C_2 \sum_{j=0}^{k-1} \sum_{n=0}^j \int_0^r M(s, A_j^{(n)}) (1-s)^{k-j+n-1} ds \right), \quad (4.14)$$

for all $0 \leq r < 1$.

(ii) If $A_j \in \mathcal{H}(\Delta(0, R))$ for some $R \in (1, \infty)$, then

$$M(r, f) \leq C_1 r^{k-1} \exp \left(C_2 \sum_{j=0}^{k-1} \sum_{n=0}^j \int_0^r M(s, A_j^{(n)}) s^{k-j+n-1} ds \right), \quad (4.15)$$

for all $1 < r < R$.

Herold's comparison theorem can be summarized as follows [36, Theorem H]. Let v be a solution of

$$v^{(k)} - \sum_{j=1}^k p_j(x) v^{(k-j)} = 0, \quad x \in [a, b],$$

where each $p_j : [a, b] \rightarrow \mathbb{C}$. Let $E \subset [a, b]$ be a set of finitely many points. Now, replace each p_j by P_j which, outside of E , is continuous and satisfies $|p_j(x)| \leq P_j(x)$. Let V be a solution of the new equation outside of E such that $|v^{(j)}(a)| \leq V^{(j)}(a)$, for all $j = 0, \dots, k-1$. Then

$$|v^{(j)}(x)| \leq V^{(j)}(x), \quad x \in [a, b] \setminus E, \quad j = 0, \dots, k-1.$$

Herold's comparison theorem leads to the following theorem.

Theorem 4.3. [36, Theorem 5.1] Let f be a solution of (1.1) where $A_j \in \mathcal{H}(\mathbb{D})$, for all $j = 0, \dots, k-1$, and $A_j(z_\theta) \neq 0$ for some $0 \leq j \leq k-1$ and $z_\theta = ve^{i\theta} \in \mathbb{D}$. Then

$$M(r, f) \leq C \exp \left(k \int_v^r \sum_{j=0}^{k-1} M(s, A_j)^{\frac{1}{k-j}} ds \right), \quad (4.16)$$

where C depends on the values of $f^{(j)}$ and A_j at z_θ .

4.3 OPERATOR THEORETIC APPROACH

If f is a solution of

$$f'' + Af = 0, \quad (4.17)$$

where $A \in \mathcal{H}(\mathbb{D})$, then

$$f(z) = S_A(f)(z) + f(0) + f'(0)z, \quad z \in \mathbb{D},$$

where the operator

$$S_A(f)(z) = - \int_0^z \left(\int_0^\zeta f(w)A(w)dw \right) d\zeta, \quad z \in \mathbb{D},$$

maps $\mathcal{H}(\mathbb{D})$ into itself. If $X \subset \mathcal{H}(\mathbb{D})$ is an admissible normed space and the operator norm $\|S_A\|_{X \rightarrow X}$ satisfies

$$\|S_A\|_{X \rightarrow X} = \sup_{f \in X} \frac{\|S_A(f)\|_X}{\|f\|_X} < 1,$$

we deduce

$$\|f\|_X \leq \frac{C(f)}{1 - \|S_A\|_{X \rightarrow X}} < \infty.$$

This operator theoretic approach is behind many results which give condition for A such that all solutions belong to some function space of analytic functions.

The approach is related the classical integral operator

$$T_g(f)(z) = \int_0^z f(\zeta)g'(\zeta) d\zeta,$$

which has been studied, for example, by Pommerenke, Aleman, Cima and Siskakis, see [2–4, 56]. The application of the operator theoretic approach may be difficult due to the lack of equivalent norms (H^∞) and because Carleson measures still remain unknown (BMOA and \mathcal{B}). However, the duality relations $(H^1)^* \simeq \text{BMOA}$, $\mathcal{A}^* \simeq \mathcal{K}$ and $(A_\omega^1)^* \simeq \mathcal{B}$ suggest how to proceed.

To apply the operator theoretic approach, we usually need to utilize the dilatation f_r , defined by $f_r(z) = f(rz)$ for $r \in (0, 1)$. Then at the end of the proof, we can use facts such as $\|f\|_{H^p} = \lim_{r \rightarrow 1^-} \|f_r\|_{H^p}$ and $\|f\|_{\text{BMOA}}^2 \leq \sup_{0 < r < 1} \|f_r\|_{\text{BMOA}}^2$. For a corresponding lemma about the norm of H_ω^∞ , see [43, Lemma 11].

A seminal discovery was [57, Theorem 2], where Pommerenke gives a sharp sufficient condition for the analytic coefficient A , which places all solutions f of (4.17) to the classical Hardy space H^2 . To do this, Pommerenke writes the H^2 -norm of f in terms of f'' by using Green's formula, employs (4.17), and then applies Carleson's theorem for the Hardy spaces [15, Theorem 9.3].

A finite positive Borel measure μ on \mathbb{D} is called a q -Carleson measure for an admissible normed space $X \subset \mathcal{H}(\mathbb{D})$ if X is continuously embedded into L_μ^q . This means that the identity operator $\text{Id} : X \rightarrow L_\mu^q$ satisfies

$$\|f\|_{L_\mu^q} \leq \|\text{Id}\|_{X \rightarrow L_\mu^q} \|f\|_X, \quad f \in X,$$

where the operator norm $\|\text{Id}\|_{X \rightarrow L_\mu^q}$ is a finite number. The term Carleson measure is named after L. Carleson who obtained a characterization for such measures in the

case 145 re $X = H^p$ and $q = p$. Namely, for a finite positive Borel measure μ on \mathbb{D} and $0 < p < \infty$,

$$\left(\int_{\mathbb{D}} |f(z)|^p d\mu(z) \right)^{\frac{1}{p}} \leq \|\text{Id}\|_{H^p \rightarrow L^p_\mu} \|f\|_{H^p}, \quad f \in H^p, \quad (4.18)$$

where

$$\|\text{Id}\|_{H^p \rightarrow L^p_\mu}^p \asymp \|\mu\|_{\text{Carleson}}, \quad 0 < p < \infty.$$

Here $\|\mu\|_{\text{Carleson}}$ is the Carleson norm of μ defined by

$$\|\mu\|_{\text{Carleson}} = \sup_{a \in \mathbb{D}} \frac{\mu(S_a)}{1 - |a|} = \sup_{a \in \mathbb{D}} \int_{S_a} \frac{d\mu(z)}{1 - |a|} < \infty,$$

see [67, Theorem 9.12] and [15, Theorem 9.3]. The sets

$$S_a = \left\{ re^{i\theta} : |a| < r < 1, |\theta - \arg(a)| \leq \frac{1 - |a|}{2} \right\}, \quad a \in \mathbb{D} \setminus \{0\},$$

and $S_0 = \mathbb{D}$ are called Carleson squares.

We have

$$\|\mu\|_{\text{Carleson}} \asymp \sup_{a \in \mathbb{D}} \int_{\mathbb{D}} |\varphi'_a(z)| d\mu(z). \quad (4.19)$$

To get an upper estimate for $\|\mu\|_{\text{Carleson}}$, note that

$$\frac{1}{1 - |a|} \lesssim \frac{1 - |a|^2}{|1 - \bar{a}z|^2} = |\varphi'_a(z)|, \quad z \in S_a, \quad a \in \mathbb{D},$$

by $|1 - \bar{a}z| \leq |1 - |a|^2| + ||a|^2 - \bar{a}z| \lesssim (1 - |a|)$ for $z \in S_a$. For the other direction, apply (4.18) for $p = 1$ to φ'_a , and note that $\|\varphi'_a\|_{H^1} = 1$ for all $a \in \mathbb{D}$. See [23, p. 101].

Now we state Pommerenke's original theorem.

Theorem 10.1. [57, Theorem 2] If $A \in \mathcal{H}(\mathbb{D})$ such that $\|\mu_A\|_{\text{Carleson}}$ is small enough for $d\mu_A = |A(z)|^2(1 - |z|^2)^3 dm(z)$, then every solution of (4.17) belongs to H^2 .

A refinement 144 Theorem 4.1 shows that only the behavior of A close to boundary \mathbb{T} matters: There exists an absolute constant $0 < \beta < \infty$ such that if

$$\sup_{|a| \geq \delta} \frac{\mu_A(S_a)}{1 - |a|} \leq \beta,$$

143

for any $0 \leq \delta < 1$, then all solutions of (4.17) belong to H^2 , see [57, Theorem 3]. Theorem 4.2 generalizes Theorem 4.1 for the case of the higher order equation (1.1) and general $0 < p < \infty$.

10

Theorem 4.2. [59, Theorem 1] Let $0 \leq \delta < 1$. For every $0 < p < \infty$ there is a positive constant α , depending only on p and k such that if the coefficients $A_j \in \mathcal{H}(\mathbb{D})$ of (1.1) satisfy

$$\sup_{|a| \geq \delta} \int_{\mathbb{D}} |A_0(z)|^2 (1 - |z|^2)^{2k-1} \frac{1 - |a|^2}{|1 - \bar{a}z|^2} dm(z) \leq \alpha$$

10

and

$$\sup_{|z| \geq \delta} |A_j(z)| (1 - |z|^2)^{k-j} \leq \alpha, \quad 1, \dots, k-1,$$

then all solutions of (1.1) belong to $H^p \cap H_p^\infty$.

3

5 Summary of papers

In the following summaries, the notation used in the original papers has been changed to correspond to the previous sections.

5.1 SUMMARY OF PAPER I

5

We describe a general localization method, which can be applied to the study of differential equations in simply connected domains $D \subseteq \mathbb{C}$. Then, as an example, we define a particular localization mapping and apply known results for \mathbb{D} to improve Theorems 2.1–2.3.

5.1.1 The localization method for linear ODEs

142

In this section, we first state a general theorem about localization. Then, we introduce a particular mapping which can detect exponential growth near the boundary point $z = 1$.

8

Lemma 5.1. [42, Lemma 2.1] Let f be a solution of

$$f^{(k)} + A_{k-1}f^{(k-1)} + \cdots + A_1f' + A_0f = A_k,$$

2

where $A_0, A_1, \dots, A_k \in \mathcal{H}(D)$. Let $T : D \rightarrow D$ be locally univalent and $g = f \circ T$. Then function g is a solution of

$$g^{(k)} + c_{k-1}g^{(k-1)} + \cdots + c_1g' + c_0g = c_k, \quad (5.1)$$

where $c_j \in \mathcal{H}(D)$. Moreover,

$$\begin{aligned} \sigma_{M,n}(c_k) &= \sigma_{M,n}(A_k \circ T), & \sigma_{M,n}(c_j) &\leq \max_{m \geq j} \{\sigma_{M,n}(A_m \circ T)\}, \\ \tau_{M,n}(c_k) &= \tau_{M,n}(A_k \circ T), & \tau_{M,n}(c_j) &\leq \max_{N \in S_j} \{\tau_{M,n}(A_N \circ T)\}, \end{aligned} \quad (5.2)$$

where $S_j = \{N \in \mathbb{N} : \sigma_{M,n}(A_N \circ T) = \max_{m \geq j} \{\sigma_{M,n}(A_m \circ T)\}\}$, for $j = 0, 1, \dots, k-1$.

13

Proof of Lemma 5.1 follows easily, since by a straightforward calculation, g is a solution of (5.1) where $c_k = (a_k \circ T)P_{k,k}(T)$,

$$c_j = \frac{1}{P_{j,j}(T)} \left[(A_j \circ T)(T')^k - P_{k,j}(T) - \sum_{m=j+1}^{k-1} c_m P_{m,j}(T) \right],$$

for $j = 0, 1, \dots, k-1$, and $P_{m,j}(T)$ is defined by

$$g^{(m)} = \sum_{j=0}^m (f^{(j)} \circ T) P_{m,j}(T).$$

Hence $P_{m,j}(T)$ is a polynomial in $T', T'', \dots, T^{(m)}$ with integer coefficients, a so-called Bell polynomial. We can inductively solve $c_{k-1}, c_{k-2}, \dots, c_0$ and see that (5.2) holds.

Here we may mention that, in Paper III, the formulas

$$\begin{aligned}
 c_k &= (A_k \circ T)(T')^k, \\
 c_{k-1} &= (A_{k-1} \circ T)T' - \frac{k(k-1)}{2} \frac{T''}{T'}, \\
 c_{k-2} &= (A_{k-2} \circ T)(T')^2 - (A_{k-1} \circ T)T'' \\
 &\quad + \frac{k(k-1)}{2} \left(\frac{T''}{T'}\right)^2 - \frac{k(k-1)(k-2)}{6} \frac{T'''}{T'},
 \end{aligned} \tag{5.3}$$

which hold for a general $k \in \mathbb{N}$, were used in the case $k = 3$.

We study equations (5.5), (5.7) and (5.8) via the localization map $T : \mathbb{D} \rightarrow \mathbb{D}$, defined by

$$T(z) = T_{\beta,\gamma}(z) = 1 - \sin(\beta/2)e^{i\gamma} \left(\frac{1-z}{2}\right)^p, \tag{5.4}$$

where $\beta \in (0, \pi/2]$, $p = p(\beta) = \beta(\pi - \beta)/\pi^2 \in (0, 1/4]$ and $\gamma \in (-\pi/2, \pi/2)$ such that $|\gamma| \leq (\pi - \beta)^2/2\pi \in (0, \pi/2)$. Here $T(\mathbb{D})$ is a tear shaped region having a vertex of angle $p\pi$ touching \mathbb{T} at $z = 1$, see Figure 5.1. The domain $T(\mathbb{D})$ has the symmetry axis $T((-1, 1))$ which meets the real axis at angle γ . As β decreases, $T(\mathbb{D})$ becomes thinner, $T((-1, 1))$ becomes shorter and angle γ can be set larger [42].

If $g \in \mathcal{H}(\mathbb{D})$ grows fast near the point $z = 1$ in terms of the iterated order of growth, then T carries the property to $g = f \circ T$, as the next lemma shows.

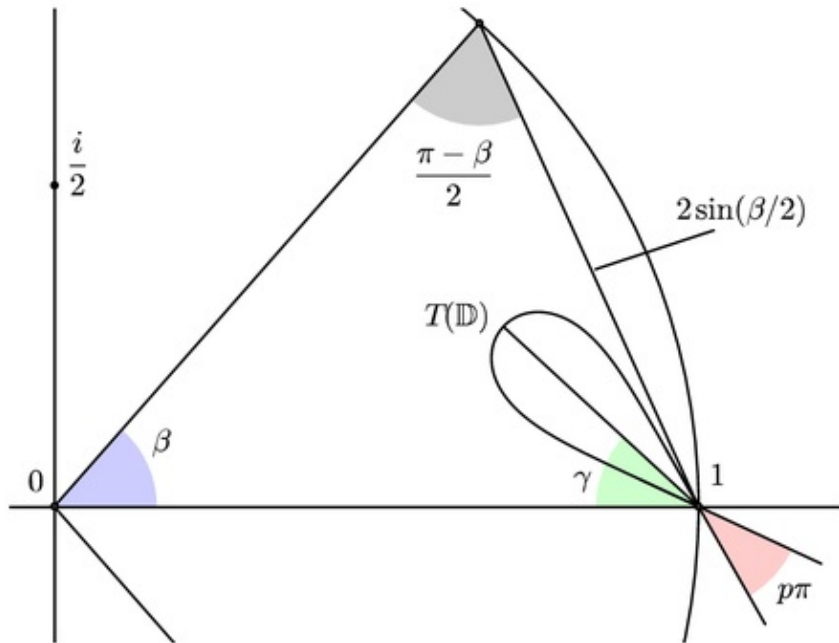


Figure 5.1: Domain $T(\mathbb{D})$ with parameters $\beta = 0.85$ and $\gamma = -0.75$. In this case, we have $p = \beta(\pi - \beta)/\pi^2 \approx 0.197$ and $2 \sin(\beta/2) \approx 0.825$.

Lemma 5.2. [42, Lemma 2.2] Let $g \in \mathcal{H}(D)$ and $g = f \circ T$, where T is defined by (5.4). Then $\sigma_{M,n}(f) \geq \sigma_{M,n}(g)/p$ for $n \in \mathbb{N}$.

The proof of Lemma 5.2 is straightforward and follows from the definition of the order $\sigma_{M,n}$ and the geometric properties of the conformal map T . Note that f can grow arbitrarily fast even when $f \circ T$ grows slowly.

5.1.2 Iterated order of growth of solutions

Second order equations

We apply the localization map T , defined in (5.4), to the equation

$$f'' + A_1(z) \exp\left(\frac{b_1}{(1-z)^{q_1}}\right) f' + A_0(z) \exp\left(\frac{b_0}{(1-z)^{q_0}}\right) f = 0, \quad (5.5)$$

where $A_0, A_1 \in \mathcal{H}(\mathbb{D} \cup \{|z-1| < \varepsilon\})$, for some $\varepsilon > 0$ and, to avoid trivial cases, $A_0 \not\equiv 0, b_1, b_0, q_1, q_0 \neq 0, \operatorname{Re}(q_0) > 0$. Earlier results concerning equation (5.5) were discussed in Section 2.4.

Theorem 5.3. [42, Theorems 1.2 and 1.3] Let f be an arbitrary non-trivial solution of (5.5), where $q_1 = q_0 = q$.

- (i) If $q \in (2, \infty)$ and $\arg(b_1) \neq \arg(b_0)$, then $\sigma_{M,2}(f) \geq q$.
- (ii) If $\operatorname{Im}(q) \neq 0 < \operatorname{Re}(q)$ and $|b_1| < |b_0|$, then $\sigma_{M,2}(f) \geq \operatorname{Re}(q)$.

The case $q \in (0, 2]$, which is not covered by Theorem 5.3(i), can be done with stronger assumptions, see Theorem 5.6 below. For $q \in (2, \infty)$, Theorem 5.3(i) improves Theorem 2.2, and Theorem 5.6 improves [29, Theorem 1.11].

Theorem 5.4. [42, Theorem 1.4] Let $q_1 \neq q_0$ in equation (5.5). Assume that either $q_0, q_1 \in (0, \infty)$ and

$$\operatorname{Re}\left(\frac{b_1}{e^{i\gamma q_1}}\right) < 0 < \operatorname{Re}\left(\frac{b_0}{e^{i\gamma q_0}}\right), \quad \text{for some } \gamma \in \left(-\frac{\pi}{2}, \frac{\pi}{2}\right), \quad (5.6)$$

or $\operatorname{Im}(q_0) \neq 0$ and $\operatorname{Re}(q_1) < \operatorname{Re}(q_0)$. Then $\sigma_{M,2}(f) \geq \operatorname{Re}(q_0)$ for all non-trivial solutions f of (5.5).

In Paper II, we discuss in detail when (5.6) holds, see [42, Corollary 1.5] and the discussion after that. See also Figure 5.2.

Higher order equations

Here, we consider some higher order differential equations.

Theorem 5.5. [42, Theorem 1.1] Let f be an arbitrary non-trivial solution of

$$f^{(k)} + A_{k-1}(z)f^{(k-1)} + \dots + A_1(z)f' + A_0(z) \exp_n\left(\frac{b}{(1-z)^q}\right) f = 0, \quad (5.7)$$

where $k, n \in \mathbb{N}$, $A_j \in \mathcal{H}(\mathbb{D} \cup \{|z-1| < \varepsilon\})$, for some $\varepsilon > 0$, A_0 does not vanish identically and $b, q \in \mathbb{C} \setminus \{0\}$. Suppose that $\operatorname{Im}(q_0) \neq 0$ or $|\arg(b_0)| < \frac{\pi}{2}(\operatorname{Re}(q_0) + 1)$. Then $\sigma_{M,n+1}(f) \geq \operatorname{Re}(q_0)$.

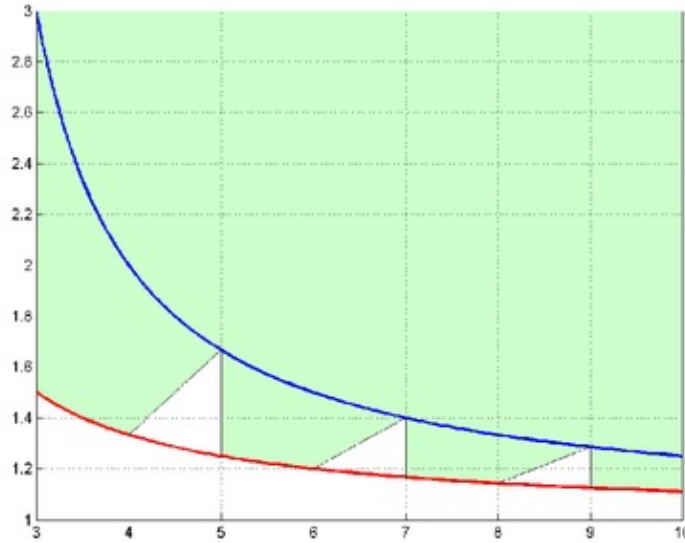


Figure 5.2: The green area represents those pairs $(q_0, q_1) \in [3, 10] \times [1, 3]$ such that condition 5.6 holds for any $b_0, b_1 \in \mathbb{C} \setminus 0$. The sawteeth are bounded by the blue curve $q_1 = q_0/(q_0 - 2)$ the red curve $q_1 = q_0/(q_0 - 1)$.

Theorem 5.5 implies Theorem 2.1 as a special case, by setting $k = 2$, $n = 1$ and $q \in (1, \infty)$. Next, we state two generalizations.

Theorem 5.6. [42, Theorem 2.3] Let f be an arbitrary non-trivial solution of

$$f^{(k)} + \sum_{j=0}^{k-1} A_j(z) \exp\left(\frac{b_j}{(1-z)^q}\right) f^{(j)} = 0, \quad (5.8)$$

where $k \in \mathbb{N}$, $A_j \in \mathcal{H}(\mathbb{D} \cup \{|z-1| < \varepsilon\})$ for some $\varepsilon > 0$, $q \in (0, \infty)$ and $b_j \in \mathbb{C}$ for all $j = 0, 1, \dots, k-1$. Let $A_0 \neq 0$ and $b_0 \neq 0$. Assume that $b_j/b_0 \in [0, 1)$ for all $j = 0, 1, \dots, k-1$ with at most one exception $b_j = b_m$ for which $\arg(b_m) \neq \arg(b_0)$. Suppose that one of the conditions

(i) $\max(\operatorname{Re}(b_m), 0) < \operatorname{Re}(b_0)$;

(ii) $0 < \operatorname{Re}(b_0) \leq \operatorname{Re}(b_m)$, $\arg\left(\frac{b_m}{b_0}\right) \in (0, \pi)$ and $\arg\left(\frac{i}{b_m - b_0}\right) < \frac{\pi}{2}q$;

(iii) $\operatorname{Re}(b_0) \leq 0$, $\arg\left(\frac{b_m}{b_0}\right) \in (0, \pi]$ and $\arg\left(\frac{b_m}{i}\right) < \frac{\pi}{2}q$

holds or that one of the conditions holds when b_0 and b_m are replaced by \bar{b}_0 and \bar{b}_m respectively. Then $\sigma_{M,2}(f) \geq \operatorname{Re}(q)$.

For a non-homogenous version of Theorem 5.6, see [42, Theorem 2.4].

5.2 SUMMARY OF PAPER II

We give sufficient conditions for the coefficients such that all solutions of

$$f^{(k)} + A_{k-1}f^{(k-1)} + \cdots + A_1f' + A_0f = A_k \quad (5.9)$$

belong to $H_\omega^\infty(D)$. Here $k \in \mathbb{N} \setminus \{1\}$ and A_0, A_1, \dots, A_k are analytic in a simply connected domain D , which is typically the unit disc \mathbb{D} . In Theorem 5.2, the domain D needs only to be starlike: $0 \in D$ and D contains the linear segment $[0, z_0]$ for all points $z_0 \in D$.

5.2.1 Integration method involving multiple steps

Let a bounded, measurable and radial function $\omega : \mathbb{D} \rightarrow (0, \infty)$ satisfy

$$\limsup_{r \rightarrow 1^-} \omega(r) \int_0^r \frac{ds}{\omega(s)(1-s)} < M < \infty, \quad (5.10)$$

for some $M = M(\omega) \in (0, \infty)$ and

$$\limsup_{r \rightarrow 1^-} \frac{\omega(r)}{\omega\left(\frac{1+\varepsilon r}{1+\varepsilon}\right)} < m \quad (5.11)$$

for some constants $\varepsilon \in (0, \infty)$ and $m = m(\omega, \varepsilon) \in (0, \infty)$. Then, by (5.10) there exists constants $M_k = M_k(\omega, k) \in (0, M]$ and $M_0 = M_0(\omega) \in (0, \infty)$ such that

$$\limsup_{r \rightarrow 1^-} \omega(r)(1-r)^{k-1} \int_0^r \frac{ds}{\omega(s)(1-s)^k} < M_k, \quad k = 1, \dots, n, \quad (5.12)$$

and

$$\omega(t) \int_0^t \frac{ds}{\omega(s)(1-s)} < M_0, \quad t \in (0, 1).$$

198 **orem 5.1.** [43, Theorem 1] Let $\omega : \mathbb{D} \rightarrow (0, \infty)$ be radial and satisfy (5.10) and (5.11). Then the following assertions hold:

(a) If the n th primitive of A_n belongs to H_ω^∞ and

$$E = P_n \left(\|A_0\|_{H_n^\infty} + m \sum_{k=1}^{n-1} k!(1+\varepsilon)^k \|A_k\|_{H_{n-k}^\infty} \right) < 1,$$

where $P_n = \prod_{k=1}^n M_k$ with constants M_k as in (5.12) and m, ε are as in (5.11), then all solutions of (1.1) belong to H_ω^∞ .

(b) If the $(n-1)$ th primitive of A_n belongs to H_ω^∞ and

$$F = P_{n-1} \left(\sup_{z \in \mathbb{D}} |A_0(z)| \omega(z) (1-|z|)^{n-1} \int_0^{|z|} \frac{dr}{\omega(r)} + \|A_1\|_{H_{n-1}^\infty} + m \sum_{k=1}^{n-2} k!(1+\varepsilon)^k \|A_{k+1}\|_{H_{n-k-1}^\infty} \right) < 1,$$

where $P_{n-1} = \prod_{k=1}^{n-1} M_k$ with constants M_k as in (5.12) and m, ε are as in (5.11), then the derivative of every solution of (1.1) belongs to H_ω^∞ .

Moreover, if we consider the equations

$$f^{(n)} + A_0 f = 0 \quad \text{and} \quad f^{(n)} + A_1 f' + A_0 f = 0$$

in (a) and (b), respectively, then the assumption (5.11) regarding ω is not necessary.

In the proof of Theorem 5.1, an estimate for f in terms of $f^{(n)}$ is obtained step-by-step by using the Fundamental Theorem of Calculus (2.2) with inequality (5.12) for $k = 1, \dots, n$, see the proof of [43, Lemma 9]. In this way, the constants M_k can be optimized on each step. If we use (2.2) multiple times before involving the weight ω or if we use, for example, the representation formula [36, Theorem 3.1], the sharp constants are lost.

Condition (5.10) implies that ω has to decrease quite fast. In particular, there exists $p \in (0, \infty)$ such that $\omega(r)/(1-r)^p$ is bounded [61, Lemma 2]. Condition (5.11) restricts the rate at which ω can decrease. If ω is nonincreasing, then (5.11) is equivalent to the doubling condition: $\omega(r) \leq m\omega\left(\frac{1+r}{2}\right)$ when $r \in [0, 1)$ is close to one.

Conditions (5.10) and (5.11) are independent. Namely, $\omega(r) = \exp\left(-\frac{1}{1-r}\right)$ satisfies (5.10) but fails (5.11). Conversely, $\omega(r) = \left(\log \frac{e}{1-r}\right)^{-1}$ satisfies (5.11) but fails (5.10). For more properties on (5.10) and (5.11), see [43].

5.2.2 Integration method via a differentiation identity

In the proof of Theorem 5.1, an upper bound is given to the terms $A_j f$ in terms of $A_j f$, by using the Cauchy Integral Formula and (5.11). Meanwhile, in the proof of Theorem 5.2 below, use the identity

$$A_m f^{(m)} = \sum_{j=0}^m (-1)^j \binom{m}{j} (A_m^{(j)} f)^{(m-j)},$$

and then remove the derivative on the right-hand side by integrating repeatedly along a line segment. Consequently, the sufficient condition for the coefficients A_j is an integral condition. Denote the generated quantities by

$$F_K(m, \omega)(z) = \left| \sum_{j=1}^m (-1)^{m-j} \binom{n-K-j}{m-j} A_{n-j}^{(m-j)}(\zeta_m) \right| \omega(z)^{-1},$$

for $K = 0, 1$ and $1 \leq m \leq n$, and the repeated integration along a line segment by

$$I_0(F, z) = |F(z)| \quad \text{and} \quad I_{n+1}(F, z) = \int_0^z I_n(F, \zeta) |d\zeta|$$

for $n \in \mathbb{N}$ and $z \in D$. Here F is a measurable function in a starlike domain D .

Theorem 5.2. [43, Theorem 2] Let D be a starlike domain and let $\omega : D \rightarrow (0, \infty)$ be a measurable and bounded function. Let the coefficients $A_j \in \mathcal{H}(D)$, $j = 0, \dots, n$, in equation (5.9).

(a) If

$$E = \sup_{z \in D} \omega(z) \sum_{m=1}^n I_m(F_0(m, \omega), z) < 1$$

and the n th primitive of A_n belongs to $H_\omega^\infty(D)$, then all solutions of equation (5.9) belong to $H_\omega^\infty(D)$.

(b) If

$$F = \sup_{z \in D} \omega(z) \left[I_{n-1}(A_0 I_1(\omega^{-1}), z) + \sum_{m=1}^{n-1} I_m(F_1(m, \omega), z) \right] < 1,$$

and the $(n-1)$ th primitive of A_n belongs to $H_\omega^\infty(D)$, then the derivative of every solution of (5.9) belongs to $H_\omega^\infty(D)$.

168

Theorem 5.2 and condition (5.10) imply a version of Theorem 5.1, which is true without the assumption (5.11), but where the sharp constants are lost, see [167, Theorem 3]. Theorem 5.2 is more general than Theorem 5.1 also in the way that \mathbb{D} may be replaced by an arbitrary starlike domain. For more general domains, see the discussion after [43, Theorem 2].

Consequences and sharpness of main results

If $\omega(z) = (1 - |z|)^p$ for $p \in (0, \infty)$, then the quantities E and F in Theorem 5.1 can be chosen to be

$$E = \prod_{j=1}^n \frac{1}{p+j-1} \left(\|A_0\|_{H_n^\infty} + \sum_{k=1}^{n-1} k! \frac{(k+p)^{k+p}}{k^k p^p} \|A_k\|_{H_{n-k}^\infty} \right)$$

and

$$F = \prod_{j=1}^{n-1} \frac{1}{p+j-1} \left(\sup_{z \in \mathbb{D}} |A_0(z)| (1 - |z|)^{p+n-1} \int_0^{|z|} \frac{dr}{(1-r)^p} + \|A_1\|_{H_{n-1}^\infty} + \sum_{k=1}^{n-2} k! \frac{(k+p)^{k+p}}{k^k p^p} \|A_{k+1}\|_{H_{n-k-1}^\infty} \right), \quad (5.13)$$

respectively. In this case, concrete upper bounds for $\|f\|_{H_p^\infty}$ and $\|f\|_{\mathcal{B}^n}$ are found, see [43, Corollary 4].

In the case of equation

$$f'' + Af = 0,$$

where $A \in \mathcal{H}(\mathbb{D})$, Theorem 5.1 is sharp in the sense that assumptions $E < 1$ and $F < 1$ cannot be replaced by $E < 1 + \varepsilon$ or $F < 1 + \varepsilon$, respectively, for any $\varepsilon \in (0, \infty)$, see [43, Example 5].

Corollary 5.3. [43, Corollary 6] Let f be a solution of (1.1) where $\omega \in \mathcal{H}(\mathbb{D})$, for all $j = 0, \dots, n$. Let $A_n \equiv 0$ and let $F = F(p)$ be defined as in (5.13). Then the following assertions hold:

(a) If $F(p) < 1$ holds with $p = 1$ and $\int_0^1 \frac{K(-\log r)}{(1-r)^2} r dr < \infty$, then $f \in \mathcal{B} = Q_K$.

(b) If $F(p) < 1$ with $p \in [\frac{1}{2}, 1)$ and $\int_0^1 \frac{K(-\log r)}{(1-r)^{2p}} r dr < \infty$, then $f \in \mathcal{B}^p \subset Q_{K,0}$.

(c) If $F(p) < 1$ with $p \in (0, \frac{1}{2})$, then $f \in \mathcal{B}^p \subset \mathcal{D} \subset Q_K$. Moreover, if $K(0) = 0$, then $f \in \mathcal{B}^p \subset \mathcal{D} \subset Q_{K,0}$.

Corollary 5.3 improves Theorems 3.3 and 3.4. Moreover, recall that if $f \in \mathcal{B}^p$ for some $0 \leq p < 1$, then f is continuous in $\overline{\mathbb{D}}$ and $f(e^{it}) \in \Lambda_{1-p}$, that is, f satisfies a Lipschitz condition of order $1 - p$, see [15, Theorem 5.1]. Hence, Corollary 5.3 implies also facts about the continuity of f .

Corollary 5.4. [43, Corollary 8] Let $A(z) = \sum_{k=0}^{\infty} a_k z^k \in \mathcal{H}(\mathbb{D})$ and let f be a solution of (1.3). Then the following assertions hold:

- (a) If $\alpha \in (0, 1)$ and $|a_k| < \alpha(1 - \alpha) \frac{\Gamma(k + \alpha + 1)}{k! \Gamma(\alpha + 1)}$ for $k \in \mathbb{N} \cup \{0\}$, then $f \in \mathcal{B}^\alpha$.
- (b) If $|a_k| < \frac{1}{k!} \int_1^2 \frac{\Gamma(k+x)}{\Gamma(x)} dx$ for $k \in \mathbb{N} \cup \{0\}$, then $f \in \mathcal{B}$.
- (c) If $\alpha \in (1, \infty)$ and $|a_k| < \alpha(\alpha - 1)(1 + k)$ for $k \in \mathbb{N} \cup \{0\}$, then $f \in \mathcal{B}^\alpha$.

Corollary 5.4(a) partially improves Theorem 3.1, which requires

$$|a_k| \leq 1 = o\left(\frac{\Gamma(k + \alpha + 1)}{k! \Gamma(\alpha + 1)}\right), \quad k \rightarrow \infty,$$

to yield that all solutions of (1.3) belong to the Dirichlet space.

5.2.3 A classical theorem in the plane

As a straightforward application of Theorem 5.2, we obtain a part of [48, Theorem 8.3]. See [48] for proof in terms of the Wiman-Valiron theory.

Theorem 5.5. [43, Theorem A] Let the coefficients A_0, \dots, A_{n-1} of (5.9) be polynomials and A_n an entire function with a finite order of growth $\rho(A_n)$. Then all solutions of (5.9) are entire functions of finite order. Moreover,

$$\rho(f) \leq \max \left\{ 1 + \max_{0 \leq j \leq n-1} \frac{\deg(A_j)}{n-j}, \rho(A_n) \right\} \quad (5.14)$$

for every solution f .

Our proof of Theorem 5.5 directly generalizes to iterated order case and we obtain [7, Theorems 4(i) and 4(ii)], according to which every solution of (1.1) satisfies

$$\rho_{k+1}(f) \leq \max \left\{ \max_{0 \leq j \leq n-1} \rho_k(A_j), \rho_{k+1}(A_n) \right\}. \quad (5.15)$$

For $A_n \equiv 0$, condition (5.15) can be given also by the growth estimates (4.16) and (4.15) or Picard's successive approximations, see [25, Theorem D]. Moreover, condition (5.14) follows from estimate (4.15). Conditions (5.14) and (5.15) have a similarity with the fact that each solution z_0 of the polynomial equation

$$z^n + a_{n-1}z^{n-1} + a_{n-2}z^{n-2} + \dots + a_1z + a_0 = 0,$$

satisfies

$$\frac{|a_0|}{1 + \sum_{j=0}^{n-1} |a_j|} \leq |z_0| \leq 2 + \max_{0 \leq j \leq n-1} \frac{|a_j|}{n-j},$$

which can be seen by modifying the proof of [48, Lemma 1.3.2]. This is no surprise, since Wiman-Valiron theory transforms the differential equation (1.1) to an algebraic equation, which, at least asymptotically, is a polynomial equation.

5.3 SUMMARY OF PAPER III

We present a counterpart of the Hardy-Stein-Spencer formula for the higher order derivatives, which has applications to differential equations. Then we consider the bounded, BMO and \mathcal{B} solutions of a second order differential equation and the zero separation of solutions of higher order differential equations.

5.3.1 A counterpart of the Hardy-Stein-Spencer formula for higher order derivatives

Define for $f \in \mathcal{H}(\mathbb{D})$, $0 < p < \infty$ and $k \in \mathbb{N}$ the quantities

$$N(f, p, k) = \|f\|_{H^p}^p - \sum_{j=0}^{k-1} |f^{(j)}(0)|,$$

$$M(f, p, k) = \int_{\mathbb{D}} |f(z)|^{p-2} |f^{(k)}(z)|^2 (1 - |z|^2)^{2k-1} dm(z).$$

We are now motivated by the question whether or not

$$N(f, p, k) \leq C(p, k) M(f, p, k), \quad C(p, k) \xrightarrow{p \rightarrow 0^+} 0^+? \quad (5.16)$$

If $k = 1$, the answer is affirmative by the Hardy-Stein-Spencer formula (3.2). If $k = 2$ and $f \in \mathcal{H}(\mathbb{D})$ is non-vanishing such that $\|\log f\|_{\mathcal{B}}$ is sufficiently small then (5.16) holds for $k = 2$ with $C(p) \asymp p^2$ as $p \rightarrow 0^+$. To see this, apply the Hardy-Stein-Spencer formula to $g = f^{(p-2)/2} f' \in \mathcal{H}(\mathbb{D})$. For general k obtain the next theorem whose proof relies on a classical characterization of H^p spaces in terms of the Lusin area function, see [1, p. 125] and [21, pp. 55-56].

Theorem 5.1. [27, Theorem 4] Let $f \in \mathcal{H}(\mathbb{D})$ and $k \in \mathbb{N}$.

- (i) If $0 < p \leq 2$, then $N(f, p, k) \lesssim M(f, p, k)$.
- (ii) If $2 \leq p < \infty$, then $M(f, p, k) \lesssim N(f, p, k)$.
- (iii) If $0 < p < \infty$ and there exists $0 < \delta < 1$ such that f is univalent in each pseudo-hyperbolic disc $\Delta(a, \delta)$, $a \in \mathbb{D}$, then $N(f, p, k) \lesssim M(f, p, k)$.

The comparison constants are independent of f and in (i) and (ii) they depend only on p . In (iii) the comparison constant depends on p and δ .

Theorem 5.1(i) has two immediate applications in the case, when $A \in \mathcal{H}(\mathbb{D})$ such that $d\mu_A(z) = |A(z)|^2 (1 - |z|^2)^3 dm(z)$ is a Carleson measure. First, let f be a solution of

$$f'' + Af = 0 \quad (5.17)$$

and let $f_r(z) = f(rz)$ for $0 < r < 1$. Since $\limsup_{r \rightarrow 1^-} \|\mu_{A_r}\|_{\text{Carleson}} \lesssim \|\mu_A\|_{\text{Carleson}}$ by the discussion in the proof of [27, Theorem A] and (4.19), we get by Theorem 5.1(i) and Carleson's theorem

$$N(f_r, p, 2) \lesssim \int_{\mathbb{D}} |f_r(z)|^p |A(rz)|^2 (1 - |z|^2)^3 dm(z) \lesssim \|f_r\|_{H^p}^p \|\mu_A\|_{\text{Carleson}}$$

for r large enough. Hence, if $\|\mu_A\|_{\text{Carleson}}$ is small enough, depending on $0 < p < \infty$, then $f \in H^p$. This is an alternative proof of a special case of [59, Theorem 1.7].

If inequality (5.16) were true for $k = 2$, then we could [27] prove [59, Theorem 1.7] in the case of equation (5.17) to the form: if $d\mu_A(z) = |A(z)|^2(1 - |z|^2)^3 dm(z)$ is a Carleson measure, then all solutions of (5.17) belong to $\bigcup_{0 < p < \infty} H^p$.

5.3.2 Solutions in H^∞ , BMOA and \mathcal{B} by an operator theoretic approach

We give sufficient conditions for the analytic coefficient A of (5.17) which place solutions in H^∞ , BMOA or \mathcal{B} . In the case of bounded solutions, the sufficient condition is given in terms of Cauchy transforms, defined by (3.3).

Theorem 5.2. [27, Theorem 2] Let $A \in \mathcal{H}(\mathbb{D})$. If

$$\limsup_{r \rightarrow 1^-} \sup_{z \in \mathbb{D}} \|A_{r,z}\|_{\mathcal{K}} < 1$$

for

$$A_{r,z}(u) = \int_0^z \int_0^\zeta \frac{A(rw)}{1 - \bar{u}w} dw d\zeta, \quad u \in \mathbb{D},$$

then all solutions of (1.3) are bounded.

The converse implication in Theorem 5.2 [57] is open and appears to be difficult. If (5.17) admits linearly independent solutions $f_1, f_2 \in H^\infty$ such that

$$\inf_{z \in \mathbb{D}} (|f_1(z)| + |f_2(z)|) > 0, \quad (5.18)$$

then [137] $f_1, f_2 \in H_2^\infty$, by an application of the Corona theorem [15, Theorem 12.1]: there exists $g_1, g_2 \in H^\infty$ such that $f_1 g_1 + f_2 g_2 \equiv 1$, and consequently

$$A = A + (f_1 g_1 + f_2 g_2)'' = 2(f_1' g_1' + f_2' g_2') + f_1 g_1'' + f_2 g_2''.$$

Regarding condition (5.18), we recall that f_1 and f_2 do not have common zeros due to linear independence.

The existence of one bounded solution restricts the growth of A almost to the form $A \in H_4^\infty$. Namely, $f(z) = \exp(-(1+z)/(1-z))$ is a solution of (1.3) with coefficient $A(z) = -4z/(1-z)^4$. This is almost extremal possible growth for A since [14, Theorem 3.1(a)] implies that if (1.3) has a bounded solution, then

$$M(r, A) \lesssim \frac{(\log \frac{e}{1-r})^2}{(1-r)^4}.$$

For the space BMOA we obtain two results, namely Theorems 5.3 and 5.4 below. The proofs of Theorems 5.2-5.5 utilize the dilatation $f_r(z) = f(rz)$ for $0 < r < 1$. Note that condition (5.19) does not include a limit respect to r , whereas condition (5.20) does.

Theorem 5.3. [27, Theorem 3] Let $A \in \mathcal{H}(\mathbb{D})$. If

$$\sup_{a \in \mathbb{D}} \left(\log \frac{e}{1-|a|} \right)^2 \int_{\mathbb{D}} |A(z)|^2 (1-|z|^2)^2 (1-|\varphi_a(z)|^2) dm(z) < 1 \quad (5.19)$$

is sufficiently small, then all solutions of (1.3) belong to BMOA.

Theorem 5.3 is inspired by [62, Theorem 3.1] and related to so-called logarithmic Carleson measures, see Paper III and references therein.

Theorem 5.4. [27, Theorem 14] Let $A \in \mathcal{H}(\mathbb{D})$. If

$$\limsup_{r \rightarrow 1^-} \sup_{a \in \mathbb{D}} \int_{\mathbb{D}} \left(\frac{1}{2\pi} \int_0^{2\pi} \left| \int_0^z \frac{A(r\zeta) d\zeta}{1 - e^{-it}\zeta} \right| dt \right)^2 (1 - |\varphi_a(z)|^2) dm(z) \quad (5.20)$$

is sufficiently small, then all solutions of (1.3) belong to BMOA.

The condition

$$\sup_{z \in \mathbb{D}} |A(z)| (1 - |z|)^2 \left(\log \frac{e}{1 - |z|} \right)^\alpha < \infty \quad (5.21)$$

for $\alpha = 3/2$ implies the finiteness of (5.19), but also, since $\alpha > 1$, that the solutions are bounded by the growth estimate (4.14). The growth estimate (4.16) implies the same conclusion if $\alpha > 2$. Finiteness of (5.19) implies (5.21) for $\alpha = 1$, but not for any larger α . For these and other similar observations, see [27, Lemma 6] and [8, 62].

For \mathcal{B} we obtain a family of sufficient conditions given in terms of reproducing kernels B_ζ^ω of the weighted Bergman space A_ω^2 . Note that, for the ω as below, we have $\mathcal{B} \subset A_\omega^2$ [51, Proposition 6.1]. Here we only make the necessary definitions, see [27, p. 12] for a more detailed discussion. See [33], [16] and [52] for general theory of Bergman spaces.

Let $\omega : [0, 1) \rightarrow [0, \infty)$ be radial and integrable such that the norm convergence in A_ω^2 implies the uniform convergence on compact subsets of \mathbb{D} . Then each point evaluation $L_z(f) = f(z)$ is a bounded linear functional in the Hilbert space A_ω^2 . Consequently, there exists unique reproducing kernels B_ζ^ω such that

$$f(\zeta) = \langle f, B_\zeta^\omega \rangle_{A_\omega^2} = \int_{\mathbb{D}} f(u) \overline{B_\zeta^\omega(u)} \omega(u) dm(u), \quad \zeta \in \mathbb{D},$$

for all $f \in A_\omega^2$, that is, $f \in \mathcal{H}(\mathbb{D})$ and

$$\int_{\mathbb{D}} |f(u)|^2 \omega(u) dm(u) < \infty.$$

Moreover,

$$B_\zeta^\omega(u) = \sum_{n=0}^{\infty} \left[\frac{(u\bar{\zeta})^n}{2} \left(\int_0^1 r^{2n+1} \omega(r) dr \right)^{-1} \right].$$

We may assume ω to be normalized such that we have $B_\zeta^\omega(0) = 1$. Denote

$$\omega^*(u) = \int_{|u|}^1 \log \frac{r}{|u|} \omega(r) r dr, \quad u \in \mathbb{D} \setminus \{0\}.$$

In the following, we assume on ω the existence of $C = C(\omega) > 0$, $\alpha = \alpha(\omega) > 0$ and $\beta = \beta(\omega) \geq \alpha$ such that

$$C^{-1} \left(\frac{1-r}{1-t} \right)^\alpha \hat{\omega}(t) \leq \hat{\omega}(r) \leq C \left(\frac{1-r}{1-t} \right)^\beta \hat{\omega}(t) \quad (5.22)$$

for all $0 \leq r \leq t < 1$, where $\hat{\omega}(u) = \int_{|u|}^1 \omega(r) dr$ for $u \in \mathbb{D}$. The first inequality in (5.22) is equivalent to $\hat{\omega}(r) \lesssim \hat{\omega} \left(\frac{1+r}{2} \right)$ and the second one is equivalent to that there exists $K, C > 1$ such that $\hat{\omega}(r) \geq C \hat{\omega} \left(1 - \frac{1-r}{K} \right)$.

Theorem 5.5. [27, Theorem 10] Let ω be as above, and A analytic in \mathbb{D} such that $\limsup_{r \rightarrow 1^-} X_B(A_r) < \frac{1}{4}$, where

$$X_B(A_r) = \sup_{z \in \mathbb{D}} (1 - |z|^2) \int_{\mathbb{D}} \left| \int_0^z \frac{\overline{(B_\zeta^\omega)'(u)} A(r\zeta)}{(B_\zeta^\omega)'(u)} d\zeta \right| \frac{\omega^*(u)}{1 - |u|^2} dm(u).$$

Then every solution f of (1.3) belongs to \mathcal{B} and satisfies

$$\|f\|_{\mathcal{B}} \leq \frac{1}{1 - 4X_B(A)} \left(|f(0)| \sup_{z \in \mathbb{D}} (1 - |z|^2) \left| \int_0^z A(\zeta) d\zeta \right| + |f'(0)| \right),$$

where $X_B(A) < 1/4$. Moreover, if $X_B(A)$ is small enough, then all solutions of (1.3) belong to \mathcal{B} .

By [27, Theorem 11], for ω as in Theorem 5.5, condition $\limsup_{r \rightarrow 1^-} X_B(A_r) < \infty$ is equivalent to that (5.21) holds for $\alpha = 1$, which is equivalent to the boundedness of the operator $S_A : \mathcal{B} \rightarrow \mathcal{B}$

$$S_A(f)(z) = \int_0^z \left(\int_0^\zeta f(w) A(w) dw \right) d\zeta, \quad z \in \mathbb{D}.$$

If one of these conditions holds, then $f \in H^2$ [57, Theorem 3].

In [43, Corollary 4, Example 5], it was found that if

$$\sup_{z \in \mathbb{D}} |A(z)|(1 - |z|)^2 \log \frac{1}{1 - |z|} < C, \quad (5.23)$$

with a sharp constant $C = 1$, then all solutions of (5.17) belong to \mathcal{B} . This remains as the best known solution to the problem: give a sufficient condition for the analytic coefficient A of (5.17) which places all solutions in \mathcal{B} . Initially this question was stated by late Nikolaos Danikas (Aristotle University of Thessaloniki) ¹. Danikas asked the corresponding question also for the BMOA space.

Prior to [43], conditions for A such that $f \in H^\infty \subset \mathcal{B}$ were known [34, 38]. Condition (5.23) with constant $C = 1$, is less restrictive and allows solutions to belong in $(\mathcal{B} \cap H^2) \setminus H^\infty$. However, unlike all H^2 functions, an arbitrary Bloch function need not to have radial limit in any point of \mathbb{T} and its zero set does not have to satisfy the Blaschke condition. Hence, the final answer to Danikas' question remains to be given.

The proof of Theorem 5.4 shows that, in order to conclude $f \in \text{BMOA}$, it suffices to take the supremum in (5.20) over any annulus $R < |z| < 1$ instead of \mathbb{D} . This should be compared with the discussion after Theorem 4.1. A similar result can be made on Theorem 5.5. Theorems 5.3, 5.4 and 5.5 have their analogues for little Bloch space \mathcal{B}_0 and VMOA, closures of polynomials in \mathcal{B} and BMOA, which consist of those $f \in \mathcal{H}(\mathbb{D})$ for which $\lim_{|z| \rightarrow 1^-} f'(z)(1 - |z|^2) = 0$ and $\lim_{|a| \rightarrow 1^-} \|f_a\|_{H^2}^2 = 0$, respectively. See [27, Theorems 7, 15 and 13].

5.3.2 A zero separation result by localization and a growth estimate

The zeros of a non-trivial solution f of

$$f''' + A_2 f'' + A_1 f' + A_0 f = 0, \quad (5.24)$$

¹The 1997 summer school "Function Spaces and Complex Analysis" in Ilomantsi, Finland

where $A_1, A_2 \in \mathcal{H}(\mathbb{D})$, are at most two-fold. For the zeros of maximum multiplicity, we obtain the following theorem.

Theorem 5.6. [27, Theorem 1] Let $A_0, A_1, A_2 \in \mathcal{H}(\mathbb{D})$ and let f be a non-trivial solution of (5.24).

(i) If

$$\sup_{z \in \mathbb{D}} |A_j(z)|(1 - |z|^2)^{3-j} < \infty, \quad j = 0, 1, 2, \quad (5.25)$$

then the sequence of two-fold zeros of f is a finite union of separated sequences.

(ii) If

$$\sup_{a \in \mathbb{D}} \int_{\mathbb{D}} |A_j(z)|(1 - |z|^2)^{1-j} (1 - |\varphi_a(z)|^2) dm(z) < \infty, \quad (5.26)$$

for $j = 0, 1, 2$, then the sequence of two-fold zeros of f is a finite union of uniformly separated sequences.

In the proof of Theorem 5.6, equation (5.24) is localized by the automorphism φ_a and the coefficients of the localized equation can be obtained from formulas (5.3) for $k = 3$. Then Jensen's formula, and the proofs of the growth estimates (4.14) and Lemma 5.7 are applied. For the counterpart of Theorem 5.6 in the second order case, see [28, Theorem 1].

Let $\gamma > 0$, $A(z) = (1 + 4\gamma^2)/(1 - z^2)^2$, $z \in \mathbb{D}$, and f_1, f_2 as in Example 3.1. Trivially, $\{f_1^2, f_2^2, f_1 f_2\}$ is a solution base of

$$h''' + 4Ah' + 2A'h = 0. \quad (5.27)$$

In fact, $\{f_1^2, f_2^2, f_1 f_2\}$ consists of three linearly independent bounded solutions each of which has no zeros. By Example 3.1, $h = (f_2 - f_1)^2$ is a bounded solution of (5.27) whose sequence is a union of two separated sequences. Moreover, this sequence is a union of two uniformly separated sequences, since all zeros are real [15, Theorem 9.2]. In this case the coefficients of (5.27) satisfy both (5.25) and (5.26).

Lemma 5.7. [27, Lemma 5] Let $\mathcal{Z} = \{z_k\}$ be a sequence of points in \mathbb{D} such that the multiplicity of each point is at most $p \in \mathbb{N}$.

(i) If

$$\sup_{a \in \mathcal{Z}} \sum_{z_k \in \mathcal{Z} \setminus \{a\}} (1 - |\varphi_a(z_k)|^2)^2 \leq M < \infty,$$

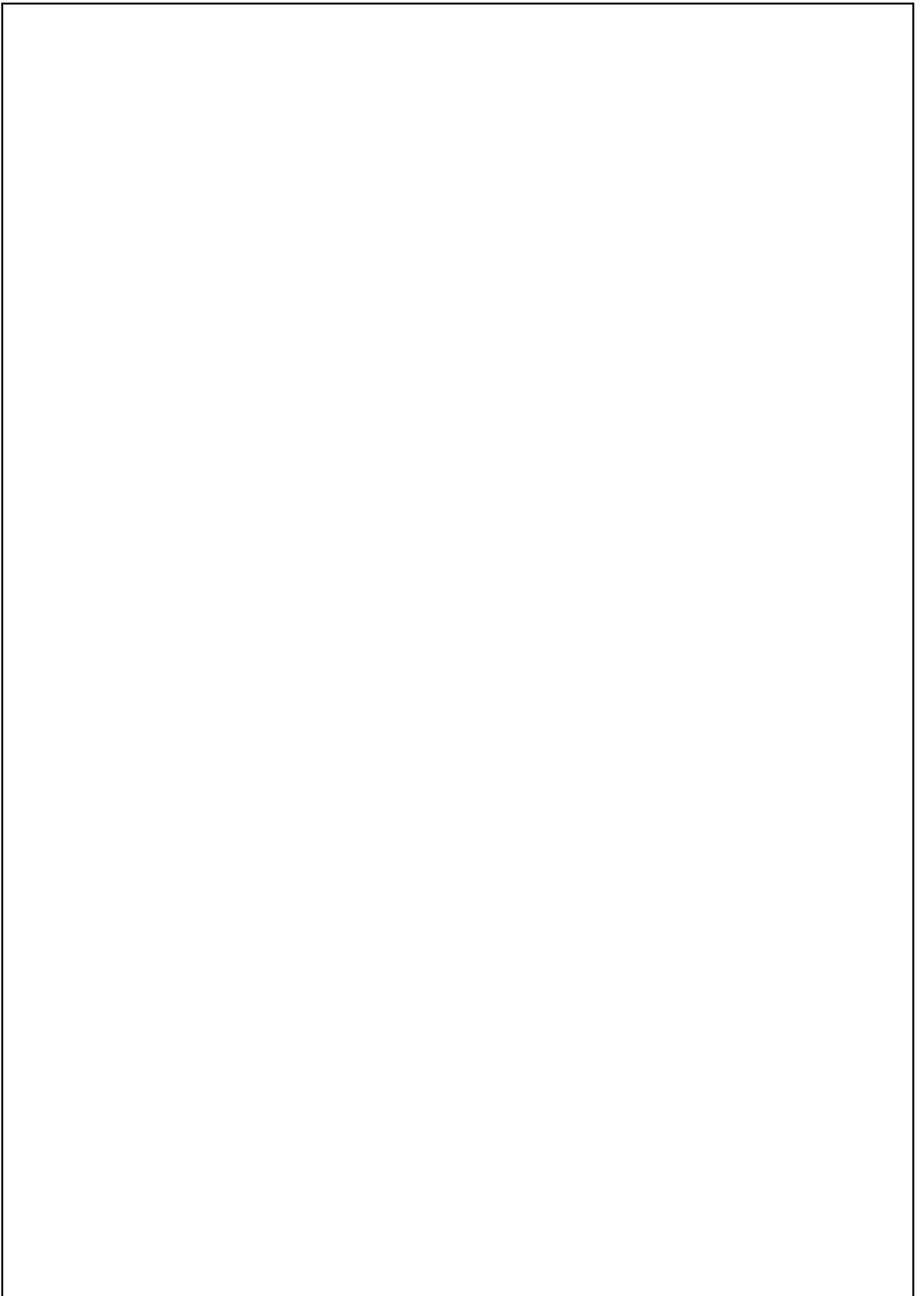
then $\{z_k\}$ can be expressed as a finite union of at most $M + p$ separated sequences.

(ii) If

$$\sup_{a \in \mathcal{Z}} \sum_{z_k \in \mathcal{Z} \setminus \{a\}} (1 - |\varphi_a(z_k)|^2) \leq M < \infty,$$

then $\{z_k\}$ can be expressed as a finite union of at most $M + p$ uniformly separated sequences.

See the proofs of [16, Theorem 15 and Lemma 16; pp. 69-71] for earlier results concerning Lemma 5.7(i).



BIBLIOGRAPHY

- [1] P. Ahern and J. Bruna, *Maximal and area integral characterizations of Hardy-Sobolev spaces in the unit disc of C^n* , Rev. Mat. Iberoamericana **4** (1988), no. 1, 123–153.
- [2] A. Aleman and J.A. Cima, *An integral operator on H^p and Hardy's inequality*, J. Anal. Math. **85** (2001), 157–176.
- [3] A. Aleman and A.G. Siskakis, *An integral operator on H^p* , Complex Variables Theory Appl. **28** (1995), 149–158.
- [4] A. Aleman and A.G. Siskakis, *Integration operators on Bergman spaces*, Indiana Univ. Math. J. **46** (1997), no. 2, 337–356.
- [5] I. Amemiya and M. Ozawa, *Non-existence of finite order solutions of $w'' + e^{-z}w' + Q(z)w = 0$* , Hokkaido Math. J., **10** (1981), 1–17.
- [6] J. Becker, *Löwnersche differentialgleichung und quasikonform fortsetzbare schlichte functionen*, J. Reine Angew. Math. **255**, 23–43 (1972).
- [7] L. Bernal, *On growth k -order of solutions of a complex homogeneous linear differential equation*, Proc. Amer. Math. Soc. **101** (1987), 317–322.
- [8] C. Chatzifountas, D. Girela and J.Á. Peláez, *Multipliers of Dirichlet subspaces of the Bloch space*, J. Operator Theory **72** (2014), no. 1, 159–191.
- [9] Z.X. Chen, *The growth of solutions of $f'' + e^{-z}f' + Q(z)f = 0$, where the order $(Q) = 1$* , Sci. China Ser. A, **45** (2002), 290–300.
- [10] Z.X. Chen and K.H. Shon, *On the growth of solutions of a class of higher order linear differential equations*, Acta. Mathematica Scientia, **24 B** (1) (2004), 52–60.
- [11] Z.X. Chen and K.H. Shon, *The growth of solutions of differential equations with coefficients of small growth in the disc*, J. Math. Anal. Appl. **297** (2004), 285–304.
- [12] M. Chuaqui, J. Gröhn, J. Heittokangas and J. Rättyä, *Zero separation results for solutions of second order linear differential equations*, Adv. Math. **245** (2013), 382–422.
- [13] J.A. Cima, A. Matheson and W. Ross, *The Cauchy Transform*, Mathematical Surveys and Monographs, **125**, American Mathematical Society, Providence, RI, 2006.
- [14] I. Chyzhykov, G.G. Gundersen and J. Heittokangas, *Linear differential equations and logarithmic derivative estimates*, Proc. London Math. Soc. **86** (2003), 735–754.
- [15] P. Duren, *Theory of H^p Spaces*, Academic Press, New York, 1970.
- [16] P. Duren and A. Schuster, *Bergman Spaces*, Mathematical Surveys and Monographs, **100**, American Mathematical Society, Providence, RI, 2004.
- [17] M. Essén and H. Wulan, *On analytic and meromorphic functions and spaces of Q_K -type*, Illinois J. Math. **46** (2002), 1233–1258.
- [18] P.C. Fenton and J. Rossi, *ODEs and Wiman-Valiron theory in the unit disc*, J. Math. Anal. Appl. **367** (2010), no. 1, 137–145.
- [19] M. Frei, *Über die Lösungen linearer Differentialgleichungen mit ganzen Funktionen als Koeffizienten*, Comment. Math. Helv. **35** (1961) 201–222.
- [20] E.A. Gallardo-Gutiérrez, M.J. González, F. Pérez-González, Ch. Pommerenke and J. Rättyä, *Locally univalent functions, VMOA and the Dirichlet space*, Proc. Lond. Math. Soc. (3) **106** (2013), no. 3, 565–588.

- 61
- [21] J.B. Garnett, *Bounded Analytic Functions*, Pure and Applied Mathematics, 96. Academic Press, Inc., New York-London, 1981.
- 7
- [22] F.W. Gehring and Ch. Pommerenke, *On the Nehari univalence criterion and quasircles*, Comment. Math. Helv. 59 (1984), no. 2, 226–242.
- 5
- [23] D. Girela, *Analytic functions of bounded mean oscillation*, Complex function spaces (Mekrijärvi, 1999), 170, Univ. Joensuu Dept. Math. Rep. Ser., 4, Univ. Joensuu, Joensuu, 2001.
- 18
- [24] G.G. Gundersen, *Finite order solutions of second order linear differential equations*, Trans. Amer. Math. Soc. 305 (1988), 415–429.
- 12
- [25] J. Gröhn, *New applications of Picard's successive approximations*, Bull. Sci. Math. 135 (2011), 475–487.
- 135
- [26] J. Gröhn, *On non-normal solutions of linear differential equations*, Proc. Amer. Math. Soc. 145 (2017), no. 3, 1209–1220.
- 10
- [27] J. Gröhn, J.-M. Huusko and J. Rättyä, *Linear differential equations with slowly growing solutions*. <https://arxiv.org/pdf/1609.01852.pdf>
- 102
- [28] J. Gröhn, A. Nicolau, J. Rättyä, *Mean growth and geometric zero distribution of solutions of linear differential equations*, to appear in J. Anal. Math. <http://arxiv.org/abs/1410.2777>
- 43
- 2
- [29] S. Hamouda, *Properties of solutions to linear differential equations with analytic coefficients in the unit disc*, Electron. J. Differential Equations, 177 (2012).
- [30] S. Hamouda, *Iterated order of solutions of linear differential equations in the unit disc*, Comput. Methods Funct. Theory. 13, (2013), no. 4, 545–555.
- 11
- [31] W.K. Hayman, *The local growth of power series: a survey of the Wiman-Valiron method*, Canad. Math. Bull. 17 (1974), 317–358.
- 24
- [32] W.K. Hayman, *Multivalent Functions*, Second edition. Cambridge Tracts in Mathematics, 110, Cambridge University Press, Cambridge, 1994.
- 23
- [33] H. Hedenmalm, B. Korenblum and K. Zhu, *Theory of Bergman Spaces*, Graduate Texts in Mathematics, 199, Springer-Verlag, New York, 2000.
- 5
- [34] J. Heittokangas, *On complex differential equations in the unit disc*, Ann. Acad. Sci. Fenn. Math. 122 (2000), 1–54.
- 45
- [35] J. Heittokangas, *On interpolating Blaschke products and Blaschke-oscillatory equations*, Constr. Approx. 34 (2011), 1–21.
- 1
- [36] J. Heittokangas, R. Korhonen and J. Rättyä, *Growth estimates for solutions of linear complex differential equations*, Ann. Acad. Sci. Fenn. Math. 29 (2004), 233–246.
- [37] J. Heittokangas, R. Korhonen and J. Rättyä, *Fast growing solutions of linear differential equations in the unit disc*, Results Math. 49 (2006), 265–278.
- [38] J. Heittokangas, R. Korhonen and J. Rättyä, *Linear differential equations with solutions in the Dirichlet type subspace of the Hardy space*, Nagoya Math. J. 187 (2007), 91–113.
- 11
- [39] J. Heittokangas, R. Korhonen and J. Rättyä, *Linear differential equations with coefficients in weighted Bergman and Hardy spaces*, Tran. Amer. Math. Soc. 360 (2008), 1035–1055.
- 1
- [40] J. Heittokangas, R. Korhonen and J. Rättyä, *Growth estimates for solutions of nonhomogeneous linear complex differential equations*, Ann. Acad. Sci. Fenn. Math. 34 (2009), 145–156.
- 7
- [41] E. Hilbert, *Remarks on a paper by Zeev Nehari*, Bull. Amer. Math. Soc. 55 (1949), 552–553.
- 35
- [42] J.-M. Huusko, *Localisation of linear differential equations in the unit disc by a conformal map*, Bull. Aust. Math. Soc. 93 (2016), no. 2, 260–271.
- 1
- [43] J.-M. Huusko, T. Korhonen and A. Reijonen, *Linear differential equations with solutions in the growth space H_ω^∞* , Ann. Acad. Sci. Fenn. Math. 41 (2016), 399–416.

- [44] G. Jank and L. Volkmann, *Einführung in die Theorie der ganzen und meromorphen Funktionen mit Anwendungen auf Differentialgleichungen*, Birkhäuser, Basel-Boston, 1985.
- [45] C.P. Juneja and G.P. Kapoor, *Analytic Functions – Growth Aspects*, Pitman Pub., 1985.
- [46] L. Kinnunen, *Linear differential equations with solution of finite iterated order*, Southeast Asian Bull. Math. **22** (4) (1998) 1–8.
- [47] W. Kraus, *Über den Zusammenhang einiger Charakteristiken eines einfach zusammenhängenden Bereiches der Kreisabbildung*, Mitt. Math. Sem. Giessen **21** (1932), 1–28.
- [48] I. Laine, *Nevanlinna Theory and Complex Differential Equations*, Walter de Gruyter, Berlin, 1993.
- [49] H. Li and H. Wulan, *Linear differential equations with solutions in the Q_K spaces*, Math. Anal. Appl. **375** (2011), 478–489.
- [50] Z. Nehari, *The Schwarzian derivative and schlicht functions*, Bull. Amer. Math. Soc. **55** (1949), 545–551.
- [51] J.A. Peláez, *Small weighted Bergman spaces*, Proceedings of the Summer School in Complex and Harmonic Analysis, and Related Topics, Publications of the University of Eastern Finland, Reports and Studies in Forestry and Natural Sciences (2016), no. 22.
- [52] J.Á. Peláez and J. Rättyä, *Weighted Bergman spaces induced by rapidly increasing weights*, Mem. Amer. Math. Soc. **227** (2014), no. 1066.
- [53] F. Pérez-González and J. Rättyä, *Univalent functions in Hardy, Bergman, Bloch and related spaces*, J. Anal. Math. **105** (2008), 125–148.
- [54] Ch. Pommerenke, *Linear-invariante Familien analytischer Funktionen I*, Math. Ann. **155** (1964), no. 2, 151–154.
- [55] Ch. Pommerenke, *Univalent Functions. With a chapter on quadratic differentials by Gerd Jensen*. Studia Mathematica/Mathematische Lehrbücher, Band XXV. Vandenhoeck & Ruprecht, Göttingen, 1975.
- [56] Ch. Pommerenke, *Schlichte funktionen und analytische funktionen von beschränkter mittlerer oszillation*, Comment. Math. Helv. **53** (1977), no. 4, 591–602.
- [57] Ch. Pommerenke, *On the mean growth of the solutions of complex linear differential equations in the disk*, Complex Var. Theory Appl. **1** (1982), 23–38.
- [58] W. Rudin, *Real and Complex Analysis*, Third edition, McGraw-Hill Book Co., New York, 1987.
- [59] J. Rättyä, *Linear differential equations with solutions in Hardy spaces*, Complex Var. Elliptic Equ. **52** (2007), no. 9, 785–795.
- [60] B. Schwarz, *Complex nonoscillation theorems and criteria of univalence*, Trans. Amer. Math. Soc. **80** (1955), 159–186.
- [61] A.L. Shields and D.L. Williams, *Bounded projections and the growth of harmonic conjugates in the unit disc*, Michigan Math. J. **29** (1982), 3–25.
- [62] A.G. Siskakis and R. Zhao, *A Volterra type operator on spaces of analytic functions*, Function spaces (Edwardsville, IL, 1998), 299–311, Contemp. Math., **232**, Amer. Math. Soc., Providence, RI, 1999.
- [63] M. Tsuji, *Potential Theory in Modern Function Theory*, Chelsea Publishing Co., reprint of the second edition, New York, 1975.
- [64] H. Wittich, *Zur Theorie linearer Differentialgleichungen im Komplexen*, Ann. Acad. Sci. Fenn. Ser. A I, **379** (1966), 1–18.
- [65] L. Xiao, *Higher-order linear differential equations with solutions having a prescribed sequence of zeros and poles in the Dirichlet space*, Ann. Polon. Math. **115** (2015), no. 3, 275–295.
- [66] S. Yamashita, *Schlicht holomorphic functions and the Riccati differential equation*, Math. Z. **157** (1977), 19–22.
- [67] K. Zhu, *Operator Theory in Function Spaces*, Second edition. Mathematical Surveys and Monographs, **138**. American Mathematical Society, Providence, RI, 2007.

Thesis

ALKUPERÄISYYSRAPORTTI

% **33**

YHTÄLÄISYYSINDEKSI

% **26**

INTERNET LÄHTEET

% **29**

JULKAISUT

% **5**

OPPILASTYÖT

ENSISIJAISET LÄHTEET

- | | | |
|----------|---|------------|
| 1 | www.acadsci.fi
Internet Lähde | % 4 |
| 2 | HUUSKO, JUHA-MATTI. "LOCALISATION OF LINEAR DIFFERENTIAL EQUATIONS IN THE UNIT DISC BY A CONFORMAL MAP", Bulletin of the Australian Mathematical Society, 2015.
Julkaisu | % 3 |
| 3 | epublications.uef.fi
Internet Lähde | % 2 |
| 4 | ejde.math.txstate.edu
Internet Lähde | % 1 |
| 5 | www.eudoxuspress.com
Internet Lähde | % 1 |
| 6 | Janne Heittokangas. "Fast Growing Solutions of Linear Differential Equations in the Unit Disc", Results in Mathematics, 12/2006
Julkaisu | % 1 |
| 7 | www.heldermann-verlag.de
Internet Lähde | % 1 |
-

www.univie.ac.at

8

Internet Lähde

%1

9

www.ams.org

Internet Lähde

%1

10

journal.taiwanmathsoc.org.tw

Internet Lähde

%1

11

real.mtak.hu

Internet Lähde

%1

12

Gröhn, Janne, and Jouni Rättyä. "On Oscillation of Solutions of Linear Differential Equations", Journal of Geometric Analysis, 2016.

Julkaisu

<%1

13

www.emis.de

Internet Lähde

<%1

14

Operator Theory Advances and Applications, 2014.

Julkaisu

<%1

15

Peláez, José Ángel, and Jouni Rättyä. "Trace class criteria for Toeplitz and composition operators on small Bergman spaces", Advances in Mathematics, 2016.

Julkaisu

<%1

16

Heittokangas, J., R. Korhonen, and J. Rättyä. "Linear Differential Equations with Solutions in the Dirichlet Type Subspace of the Hardy Space", Nagoya Mathematical Journal, 2007.

Julkaisu

<%1

17 Miroljub Jevtić, Dragan Vukotić, Miloš Arsenović. "Taylor Coefficients and Coefficient Multipliers of Hardy and Bergman-Type Spaces", Springer Nature, 2016
Julkaisu <% 1

18 www.acta.sapientia.ro
Internet Lähde <% 1

19 Encyclopaedia of Mathematics, 1995.
Julkaisu <% 1

20 www.math.u-szeged.hu
Internet Lähde <% 1

21 Li, H.. "Linear differential equations with solutions in the Q^k spaces", Journal of Mathematical Analysis and Applications, 20110315
Julkaisu <% 1

22 Jouni Rättyä. "Linear differential equations with solutions in Hardy spaces", Complex Variables and Elliptic Equations, 9/2007
Julkaisu <% 1

23 HEITTOKANGAS, JANNE, and ATTE REIJONEN. "ON THE COMPLEXITY OF FINDING A NECESSARY AND SUFFICIENT CONDITION FOR BLASCHKE-OSCILLATORY EQUATIONS", Glasgow Mathematical Journal, 2014.
Julkaisu <% 1

24

www.maths.nott.ac.uk

Internet Lähde

<% 1

25

Cao, T.B.. "The growth of solutions of linear differential equations with coefficients of iterated order in the unit disc", Journal of Mathematical Analysis and Applications, 20060701

Julkaisu

<% 1

26

Fenton, P.C.. "ODEs and WimanValiron theory in the unit disc", Journal of Mathematical Analysis and Applications, 20100701

Julkaisu

<% 1

27

www.math.utu.fi

Internet Lähde

<% 1

28

www.m-hikari.com

Internet Lähde

<% 1

29

poincare.matf.bg.ac.rs

Internet Lähde

<% 1

30

www.helsinki.fi

Internet Lähde

<% 1

31

www.ias.ac.in

Internet Lähde

<% 1

32

www.mathnet.or.kr

Internet Lähde

<% 1

33

LIAO, LIANG-WEN, and ZHUAN YE. "ON SOLUTIONS TO NONHOMOGENEOUS

<% 1

ALGEBRAIC DIFFERENTIAL EQUATIONS
AND THEIR APPLICATION", Journal of the
Australian Mathematical Society, 2014.

Julkaisu

34

LIPENG XIAO. "DIFFERENTIAL EQUATIONS
WITH COEFFICIENTS OF SLOW GROWTH
IN THE UNIT DISC", Analysis and
Applications, 2009

Julkaisu

<% 1

35

journal.austms.org.au

Internet Lähde

<% 1

36

eudml.org

Internet Lähde

<% 1

37

W. Hugh Woodin. "The Axiom of
Determinacy, Forcing Axioms, and the
Nonstationary Ideal", Walter de Gruyter
GmbH, 2010

Julkaisu

<% 1

38

math.hawaii.edu

Internet Lähde

<% 1

39

A Panorama of Modern Operator Theory and
Related Topics, 2012.

Julkaisu

<% 1

40

webpages.ull.es

Internet Lähde

<% 1

41

jmre.dlut.edu.cn

Internet Lähde

<% 1

- | | | |
|----|---|------|
| 42 | Tu, Jin, and Hai-Xia Huang. "Complex Oscillation of Linear Differential Equations with Analytic Coefficients of $[p, q]$ -Order in the Unit Disc", Computational Methods and Function Theory, 2015.
Julkaisu | <% 1 |
| 43 | arxiv.org
Internet Lähde | <% 1 |
| 44 | archive.org
Internet Lähde | <% 1 |
| 45 | webpersonal.uma.es
Internet Lähde | <% 1 |
| 46 | www-ee.stanford.edu
Internet Lähde | <% 1 |
| 47 | Vladimir G. Turaev. "Chapter VIII. Generalities on shadows", Walter de Gruyter GmbH, 2010
Julkaisu | <% 1 |
| 48 | Heittokangas, J.. "Blaschke-oscillatory equations of the form $f''+A(z)f=0$ ", Journal of Mathematical Analysis and Applications, 20060601
Julkaisu | <% 1 |
| 49 | www.reading.ac.uk
Internet Lähde | <% 1 |
| 50 | Daniel Girela. "Carleson Measures for the Bloch Space", Integral Equations and | <% 1 |

- 51** Miroslav Pavlović. "An equivalence for weighted integrals of an analytic function and its derivative", *Mathematische Nachrichten*, 11/2008 <% 1
- Julkaisu
-

- 52** Pavlović, Miroslav. "On the Littlewood–Paley λ -function and Calderón's area theorem", *Expositiones Mathematicae*, 2013. <% 1
- Julkaisu
-

- 53** Perez-Gonzalez, F.. "Forelli-Rudin estimates, Carleson measures and $F(p,q,s)$ -functions", *Journal of Mathematical Analysis and Applications*, 20060315 <% 1
- Julkaisu
-

- 54** Fang, M.. "Normal families and uniqueness theorems for entire functions", *Journal of Mathematical Analysis and Applications*, 20030415 <% 1
- Julkaisu
-

- 55** Hernández, Rodrigo, and María J. Martín. "Pre-Schwarzian and Schwarzian Derivatives of Harmonic Mappings", *Journal of Geometric Analysis*, 2015. <% 1
- Julkaisu
-

- 56** S. V. Shvedenko. "Hardy classes and related spaces of analytic functions in the unit circle, polydisc, and ball", *Journal of Soviet* <% 1

57 org.uib.no <% 1
Internet Lähde

58 Juan Jesús Donaire. "On the growth and range of functions in Möbius invariant spaces", Journal d Analyse Mathématique, 10/2010 <% 1
Julkaisu

59 Hamouda, Saada. "Iterated Order of Solutions of Linear Differential Equations in the Unit Disc", Computational Methods and Function Theory, 2013. <% 1
Julkaisu

60 nyjm.albany.edu <% 1
Internet Lähde

61 mat.uab.es <% 1
Internet Lähde

62 Graduate Texts in Mathematics, 2014. <% 1
Julkaisu

63 Lin, . "Fundamental Theory: Sequences, Series, and Infinite Products", Classical Complex Analysis A Geometric Approach (Volume 2), 2010. <% 1
Julkaisu

64 www.mathproject.de <% 1
Internet Lähde

- 65 www.hindawi.com Internet Lähde <% 1
-
- 66 **Hidden Harmony—Geometric Fantasies, 2013.** Julkaisu <% 1
-
- 67 **Submitted to Universiti Putra Malaysia** Oppilastyö <% 1
-
- 68 I. Chyzykov. "Finiteness of φ -order of solutions of linear differential equations in the unit disc", *Journal d Analyse Mathématique*, 10/2009
Julkaisu <% 1
-
- 69 theses.nottingham.ac.uk Internet Lähde <% 1
-
- 70 advancesindifferenceequations.springeropen.com Internet Lähde <% 1
-
- 71 J. Heittokangas. "Meromorphic solutions of some linear functional equations", *Aequationes Mathematicae*, 08/01/2000
Julkaisu <% 1
-
- 72 archive.numdam.org Internet Lähde <% 1
-
- 73 **Harmonic and Complex Analysis and its Applications, 2014.** Julkaisu <% 1
-
- 74 Peláez, José Ángel, and Jouni Rättyä. "Embedding theorems for Bergman spaces" <% 1

via harmonic analysis", Mathematische Annalen, 2015.

Julkaisu

75

"Function Solutions of Diophantine Equations", Value Distribution Theory Related to Number Theory, 2006

Julkaisu

<% 1

76

www.emis.ams.org

Internet Lähde

<% 1

77

www.mat.puc.cl

Internet Lähde

<% 1

78

Chen, Zong-Xuan, and Shi-An Gao. "THE FUNCTION ANALYTIC IN THE EXTERIOR OF A DISC AND ITS APPLICATION TO PERIODIC COMPLEX OSCILLATION", Bulletin of the Korean Mathematical Society, 2013.

Julkaisu

<% 1

79

Fernando Pérez-González. "Inner functions in the Möbius invariant Besov-type spaces", Proceedings of the Edinburgh Mathematical Society, 10/2009

Julkaisu

<% 1

80

Ye Zhou Li. "Oscillation of solutions of linear differential equations", Acta Mathematica Sinica English Series, 01/2008

Julkaisu

<% 1

81

Operator Methods in Ordinary and Partial

Differential Equations, 2002.

Julkaisu

<% 1

82

Martin Chuaqui. "Possible Intervals for T- and M-Orders of Solutions of Linear Differential Equations in the Unit Disc", Abstract and Applied Analysis, 2011

Julkaisu

<% 1

83

jipam.vu.edu.au

Internet Lähde

<% 1

84

Submitted to Universitas Pendidikan Indonesia

Oppilastyö

<% 1

85

emis.dsd.sztaki.hu

Internet Lähde

<% 1

86

Miroljub Jevtić. "Blaschke products in Lipschitz spaces", Proceedings of the Edinburgh Mathematical Society, 10/2009

Julkaisu

<% 1

87

R. AULASKARI. "NEW CHARACTERIZATIONS OF THE MEROMORPHIC BESOV, Q_p AND RELATED CLASSES", Bulletin of the Australian Mathematical Society, 02/2009

Julkaisu

<% 1

88

Nicolau, A.. "Bounded Functions in Mobius Invariant Dirichlet Spaces", Journal of Functional Analysis, 199711

Julkaisu

<% 1

89

Operator Theory Advances and Applications,
2015.

Julkaisu

<% 1

90

www.uam.es

Internet Lähde

<% 1

91

Xu, Hong-Yan, and Zu-Xing Xuan. "The Uniqueness of Analytic Functions on Annuli Sharing Some Values", Abstract and Applied Analysis, 2012.

Julkaisu

<% 1

92

DOUBTSOV, EVGUENI.
"CHARACTERISATIONS OF HARDY GROWTH SPACES WITH DOUBLING WEIGHTS", Bulletin of the Australian Mathematical Society, 2014.

Julkaisu

<% 1

93

Tekli, Joe, Antoine Abou Rjeily, Richard Chbeir, Gilbert Tekli, Pélagie Houngue, Kokou Yetongnon, and Minale Ashagrie Abebe. "Semantic to intelligent web era : building blocks, applications, and current trends", Proceedings of the Fifth International Conference on Management of Emergent Digital EcoSystems - MEDES 13, 2013.

Julkaisu

<% 1

94

emis.maths.tcd.ie

Internet Lähde

<% 1

95

BISHOP, CHRISTOPHER J.. "BOUNDARY

<% 1

INTERPOLATION SETS FOR CONFORMAL
MAPS", Bulletin of the London Mathematical
Society, 2006.

Julkaisu

96

dml.cz

Internet Lähde

<% 1

97

www.math.usu.edu

Internet Lähde

<% 1

98

K. Gopalsamy. "Stability and Oscillations in
Delay Differential Equations of Population
Dynamics", Springer Nature, 1992

Julkaisu

<% 1

99

Wang, J.P.. "Entire functions that share a
polynomial with their derivatives", Journal of
Mathematical Analysis and Applications,
20060815

Julkaisu

<% 1

100

Yik-Man Chiang. "Estimates on the growth of
meromorphic solutions of linear differential
equations", Commentarii Mathematici
Helvetica, 09/2004

Julkaisu

<% 1

101

www2.warwick.ac.uk

Internet Lähde

<% 1

102

lr1.uef.fi

Internet Lähde

<% 1

103

Benjamin Fine, Gerhard Rosenberger.
"Number Theory", Springer Nature, 2016

<% 1

104 dergipark.ulakbim.gov.tr <% 1
Internet Lähde

105 Li, Hao, and Songxiao Li. "Norm of an integral operator on some analytic function spaces on the unit disk", Journal of Inequalities and Applications, 2013.
Julkaisu

106 Stephanie Edwards. "Non-real Zeros of Derivatives of Real Entire Functions and the Pólya-Wiman Conjectures", Complex Variables, 1/1/2002
Julkaisu

107 Liu, Xiaosong, Gerardo R. Chacón, and Zengjian Lou. "Characterizations of the Dirichlet-Type Space", Complex Analysis and Operator Theory, 2015.
Julkaisu

108 Submitted to University of Edinburgh <% 1
Oppilastyö

109 Trends in Mathematics, 2014. <% 1
Julkaisu

110 law.vanderbilt.edu <% 1
Internet Lähde

111 Daniel Girela. "INTEGRABILITY OF THE DERIVATIVE OF A BLASCHKE PRODUCT", Proceedings of the Edinburgh Mathematical Society, 10/2007 <% 1

112 files.ele-math.com <% 1
Internet Lähde

113 [Applied and Numerical Harmonic Analysis, 2016.](#) <% 1
Julkaisu

114 [Submitted to Heriot-Watt University](#) <% 1
Oppilastyö

115 [Grohn, J.. "New applications of Picard@s successive approximations", Bulletin des sciences mathematiques, 201107/08](#) <% 1
Julkaisu

116 [El-Sayed Ahmed, A.. "Hadamard products and N^K space", Mathematical and Computer Modelling, 201001](#) <% 1
Julkaisu

117 www.wseas.org <% 1
Internet Lähde

118 www.epj-conferences.org <% 1
Internet Lähde

119 mathgateway.maa.org <% 1
Internet Lähde

120 ethesis.helsinki.fi <% 1
Internet Lähde

121 staff.uz.zgora.pl <% 1
Internet Lähde

122 Halfpap, Jennifer, Alexander Nagel, and Stephen Wainger. "The Bergman and Szegő kernels near points of infinite type", Pacific Journal of Mathematics, 2010. <% 1

Julkaisu

123 Ponnusamy, S.. "Norm estimates for convolution transforms of certain classes of analytic functions", Journal of Mathematical Analysis and Applications, 20080601 <% 1

Julkaisu

124 Springer Series in Statistics, 1995. <% 1

Julkaisu

125 Hedenmalm, H.. "Mean value surfaces with prescribed curvature form", Journal de mathematiques pures et appliquees, 200409 <% 1

Julkaisu

126 Babin, A.V.. "Uniform Long-Time Behavior of Solutions of Parabolic Equations Depending on Slow Time", Journal of Differential Equations, 19981210 <% 1

Julkaisu

127 DJORDJE ČUBRIĆ. "Normalization and the Yoneda embedding", Mathematical Structures in Computer Science, 04/1998 <% 1

Julkaisu

128 Chuaqui, Martin, and Rodrigo Hernández. "A Condition for Univalence in the Polydisk", Computational Methods and Function <% 1

Theory, 2009.

Julkaisu

-
- | | | |
|-----|--|------|
| 129 | math.gmu.edu
Internet Lähde | <% 1 |
|-----|--|------|
-
- | | | |
|-----|--|------|
| 130 | www.pmf.ni.ac.rs
Internet Lähde | <% 1 |
|-----|--|------|
-
- | | | |
|-----|--|------|
| 131 | Advanced Topics in Term Rewriting, 2002.
Julkaisu | <% 1 |
|-----|--|------|
-
- | | | |
|-----|---|------|
| 132 | Blasco, Oscar, and Salvador Pérez-Esteve. "Averaging operators, Berezin transforms and atomic decomposition on Bergman–Herz spaces", European Journal of Mathematics, 2015.
Julkaisu | <% 1 |
|-----|---|------|
-
- | | | |
|-----|---|------|
| 133 | Songxiao Li. "Riemann-Stieltjes operators between Bergman-type spaces and α -Bloch spaces", International Journal of Mathematics and Mathematical Sciences, 2006
Julkaisu | <% 1 |
|-----|---|------|
-
- | | | |
|-----|---|------|
| 134 | Gil, . "2. Convergent and Divergent Series", Numerical Methods for Special Functions, 2007.
Julkaisu | <% 1 |
|-----|---|------|
-
- | | | |
|-----|--|------|
| 135 | www.numdam.org
Internet Lähde | <% 1 |
|-----|--|------|
-
- | | | |
|-----|--|------|
| 136 | journalofinequalitiesandapplications.springeropen.com
Internet Lähde | <% 1 |
|-----|--|------|
-

- | | | |
|-----|---|------|
| 137 | ac.erikquaeghebeur.name
Internet Lähde | <% 1 |
| 138 | www.cs.umanitoba.ca
Internet Lähde | <% 1 |
| 139 | Fowler, K.E.. "The MacLane class and complex differential equations in the unit disk", <i>Journal of Mathematical Analysis and Applications</i> , 20091115
Julkaisu | <% 1 |
| 140 | www.math.keio.ac.jp
Internet Lähde | <% 1 |
| 141 | Ishizaki, K., and N. Yanagihara. "Wiman-Valiron method for difference equations", <i>Nagoya Mathematical Journal</i> , 2004.
Julkaisu | <% 1 |
| 142 | Carme Cascante. "On Integral Equations Related to Weighted Toeplitz Operators", <i>Integral Equations and Operator Theory</i> , 02/01/2011
Julkaisu | <% 1 |
| 143 | Pau, Jordi, and Ruhan Zhao. "Carleson Measures, Riemann–Stieltjes and Multiplication Operators on a General Family of Function Spaces", <i>Integral Equations and Operator Theory</i> , 2014.
Julkaisu | <% 1 |
| 144 | Jiongmin Yong. "Finding adapted solutions of forward-backward stochastic differential | <% 1 |

equations: method of continuation",
Probability Theory and Related Fields,
04/01/1997

Julkaisu

145 Chen, Shaolin, Saminathan Ponnusamy, and Antti Rasila. "On characterizations of Bloch-type, Hardy-type and Lipschitz-type spaces", *Mathematische Zeitschrift*, 2015.

Julkaisu

146 S. Stević. "Products of integral-type operators and composition operators from the mixed norm space to Bloch-type spaces", *Siberian Mathematical Journal*, 07/2009

Julkaisu

147 Menahem Max Schiffer Selected Papers Volume 2, 2014.

Julkaisu

148 Songxiao Li. "Riemann-Stieltjes operators from H^∞ space to α -Bloch spaces", *Integral Transforms and Special Functions*, 11/2008

Julkaisu

149 users.auth.gr

Internet Lähde

150 Lian-Zhong Yang. "The growth of linear differential equations and their applications", *Israel Journal of Mathematics*, 12/2005

Julkaisu

151 ZongXuan Chen. "On growth, zeros and poles

of meromorphic solutions of linear and nonlinear difference equations", Science China Mathematics, 10/2011

Julkaisu

152 ssdnm.mimuw.edu.pl <% 1
Internet Lähde

153 Fenton, P. C.. "Wiman-Valiron theory in the disc II", Bulletin of the London Mathematical Society, 2010. <% 1
Julkaisu

154 www.mindmatter.de <% 1
Internet Lähde

155 Stevo Stević. "On an integral operator on the unit ball in \mathbb{C}^n ", Journal of Inequalities and Applications, 2005 <% 1
Julkaisu

156 Qian, Ruishen, and Yecheng Shi. "Inner function in Dirichlet type spaces", Journal of Mathematical Analysis and Applications, 2015. <% 1
Julkaisu

157 www.e-hilaris.com <% 1
Internet Lähde

158 userhome.brooklyn.cuny.edu <% 1
Internet Lähde

159 Cao, T.B.. "The growth, oscillation and fixed points of solutions of complex linear differential equations in the unit disc", <% 1

- 160 Xiao-Min Li. "On the uniqueness of an entire function sharing a small entire function with some linear differential polynomial", Czechoslovak Mathematical Journal, 12/2009
Julkaisu <% 1
-

- 161 www.kurims.kyoto-u.ac.jp
Internet Lähde <% 1
-

- 162 Janne Heittokangas. "On Interpolating Blaschke Products and Blaschke-Oscillatory Equations", Constructive Approximation, 05/12/2010
Julkaisu <% 1
-

- 163 www.hanspub.org
Internet Lähde <% 1
-

- 164 Daniel Girela. "Growth properties and sequences of zeros of analytic functions in spaces of Dirichlet type", Journal of the Australian Mathematical Society, 06/2006
Julkaisu <% 1
-

- 165 projecteuclid.org
Internet Lähde <% 1
-

- 166 Radnell, David, Eric Schippers, and Wolfgang Staubach. "WEIL-PETERSSON CLASS NON-OVERLAPPING MAPPINGS INTO A RIEMANN SURFACE", Communications in <% 1

Contemporary Mathematics, 2015.

Julkaisu

-
- | | | |
|-----|--|------|
| 167 | poncelet.sciences.univ-metz.fr
Internet Lähde | <% 1 |
|-----|--|------|
-
- | | | |
|-----|---|------|
| 168 | Philip Anselone. "Spectral analysis of asymptotically compact operator sequences", Numerical Functional Analysis and Optimization, 1996
Julkaisu | <% 1 |
|-----|---|------|
-
- | | | |
|-----|--|------|
| 169 | info.lut.ac.uk
Internet Lähde | <% 1 |
|-----|--|------|
-
- | | | |
|-----|--|------|
| 170 | W. K. Hayman. "Research Problems in Complex Analysis", Bulletin of the London Mathematical Society, 09/01/1984
Julkaisu | <% 1 |
|-----|--|------|
-
- | | | |
|-----|---|------|
| 171 | Sixsmith, D. J.. "Julia and Escaping Set Spiders' Webs of Positive Area", International Mathematics Research Notices, 2014.
Julkaisu | <% 1 |
|-----|---|------|
-
- | | | |
|-----|---|------|
| 172 | Krantz, S.G.. "On the iterated logarithmic Bloch space on the unit ball", Nonlinear Analysis, 20090901/15
Julkaisu | <% 1 |
|-----|---|------|
-
- | | | |
|-----|--|------|
| 173 | A. Hinkkanen. "A sharp form of Nevanlinna's second fundamental theorem", Inventiones mathematicae, 12/1992
Julkaisu | <% 1 |
|-----|--|------|
-
- | | | |
|-----|---------------------------------------|--|
| 174 | Ilpo Laine. "Differential polynomials | |
|-----|---------------------------------------|--|

generated by linear differential equations",
Complex Variables and Elliptic Equations,
10/10/2004

Julkaisu

<% 1

175

www.nexoncn.com

Internet Lähde

<% 1

176

Lecture Notes in Mathematics, 2015.

Julkaisu

<% 1

177

Lecture Notes in Mathematics, 1981.

Julkaisu

<% 1

178

www.msri.org

Internet Lähde

<% 1

179

sugawa.cajpn.org

Internet Lähde

<% 1

180

M. Lindström. "Spectra of Composition
Operators on BMOA", Integral Equations and
Operator Theory, 09/2005

Julkaisu

<% 1

181

Árpád Baricz. "Generalized Bessel Functions
of the First Kind", Springer Nature, 2010

Julkaisu

<% 1

182

Zhigang Huang. "Relation between Small
Functions with Differential Polynomials
Generated by Solutions of Linear Differential
Equations", Abstract and Applied Analysis,
2012

Julkaisu

<% 1

- 183 Xu, Hong-Yan, Jin Tu, and Xiu-Min Zheng. "On the hyper exponent of convergence of zeros of $f^{(j)} - \varphi$ of higher order linear differential equations", *Advances in Difference Equations*, 2012.
Julkaisu <% 1
-
- 184 Eberhard Freitag. "Sequences and Series of Analytic Functions, the Residue Theorem", *Complex Analysis*, 2009
Julkaisu <% 1
-
- 185 D. Constaes. "On Cauchy estimates and growth orders of entire solutions of iterated Dirac and generalized Cauchy–Riemann equations", *Mathematical Methods in the Applied Sciences*, 09/25/2006
Julkaisu <% 1
-
- 186 ejde.math.unt.edu
Internet Lähde <% 1
-
- 187 nsp.naturalspublishing.com
Internet Lähde <% 1
-
- 188 Daniel Girela. "Interpolating Blaschke Products: Stolz and Tangential Approach Regions", *Constructive Approximation*, 03/2008
Julkaisu <% 1
-
- 189 institute.unileoben.ac.at
Internet Lähde <% 1

Escassut, Alain. "Optimal functions", *Value*

190

Distribution in p-adic Analysis, 2016.

Julkaisu

<% 1

191

scik.org

Internet Lähde

<% 1

192

Anders Olofsson. "An Operator-valued Berezin Transform and the Class of n-Hypercontractions", Integral Equations and Operator Theory, 08/2007

Julkaisu

<% 1

193

barrel.ih.otaru-uc.ac.jp

Internet Lähde

<% 1

194

Fernando Pérez-González. "Univalent functions in Hardy, Bergman, Bloch and related spaces", Journal d Analyse Mathématique, 01/2008

Julkaisu

<% 1

195

opus.bibliothek.uni-wuerzburg.de

Internet Lähde

<% 1

196

Girela, D.. "On the zeros of functions in Bergman spaces and in some other related classes of functions", Journal of Mathematical Analysis and Applications, 20050915

Julkaisu

<% 1

197

Petros Galanopoulos. "Besov Spaces, Multipliers and Univalent Functions", Complex Analysis and Operator Theory, 07/02/2011

<% 1

-
- 198 Ananieva, Aleksandra Yu. Budyika, Viktor. "To the spectral theory of the Bessel operator on finite interval and half-line.", *Journal of Mathematical Sciences*, Dec 4 2015 Issue
Julkaisu <% 1
-
- 199 "Thermal Effect", *Encyclopedia of Thermal Stresses*, 2014.
Julkaisu <% 1
-
- 200 Heittokangas, Janne, and Zhi-Tao Wen. "Functions of Finite Logarithmic Order in the Unit Disc, Part II", *Computational Methods and Function Theory*, 2015.
Julkaisu <% 1
-
- 201 Janne Gröhn. "New Findings on the Bank–Sauer Approach in Oscillation Theory", *Constructive Approximation*, 09/07/2011
Julkaisu <% 1
-
- 202 DANIEL GIRELA. "On the zeros of Bloch functions", *Mathematical Proceedings of the Cambridge Philosophical Society*, 07/2000
Julkaisu <% 1
-
- 203 Topological and Variational Methods with Applications to Nonlinear Boundary Value Problems, 2014.
Julkaisu <% 1
-
- 204 Zhu, D.. "Nonmonotonic projected algorithm with both trust region and line search for <% 1

constrained optimization", Journal of Computational and Applied Mathematics, 20000501

Julkaisu

205 Korhonen, Risto, Ilpo Laine, and Kazuya Tohge. "One-dimensional tropical Nevanlinna theory", Tropical Value Distribution Theory and Ultra-Discrete Equations, 2015.

Julkaisu

206 L. Górniewicz. "Existence and Controllability Results for First-and Second-Order Functional Semilinear Differential Inclusions with Nonlocal Conditions", Numerical Functional Analysis and Optimization, 2007

Julkaisu

207 X. Zhou. "Asymptotics of Laurent polynomials of even degree orthogonal with respect to varying exponential weights", International Mathematics Research Papers, 2006

Julkaisu

208 Alotaibi, A.. "On solutions of linear differential equations with entire coefficients", Journal of Mathematical Analysis and Applications, 20100715

Julkaisu

209 Cristóbal González. "Univalent Functions in Hardy Spaces in Terms of the Growth of Arc-Length", Journal of Geometric Analysis, 06/03/2009

<% 1

<% 1

<% 1

<% 1

<% 1

210 "Quasiconformal Mappings and Analysis", Springer Nature, 1998 <% 1
Julkaisu

211 Fenton, Peter, Janne Grohn, Janne Heittokangas, John Rossi, and Jouni Rattya. "On α -Polynomial Regular Functions, with Applications to Ordinary Differential Equations", Proceedings of the Edinburgh Mathematical Society, 2014. <% 1
Julkaisu

212 Encyclopaedia of Mathematical Sciences, 1997. <% 1
Julkaisu

213 Evgeny Abakumov. "Reverse estimates in growth spaces", Mathematische Zeitschrift, 04/05/2011 <% 1
Julkaisu

214 Ting-Bin Cao. "On the complex oscillation of differential polynomials generated by meromorphic solutions of differential equations in the unit disc", Proceedings Mathematical Sciences, 09/2010 <% 1
Julkaisu

KIRJALLISUUSLUETTELO
POIS