



UEFDSA newspaper

Joensuu/Kuopio, Finland

VOL.I . . No.4

AUGUST 4, 2019

ZERO BITCOINS



GREETINGS FROM UEFDSA

By JUHA-MATTI HUUSKO

This is the fourth issue of UEFDSA newspaper. This time we will introduce the chair of UEFDSA, Miia.

Our vice-chair Ari has written about relativism.

Myself, I visited Japan 8.-19.7.2019 and thought to share my experiences here.

Contents

• Introducing the chair of UEFDSA: [Miia](#)

Ari J. Tervashonka:

• [Relativism – philosophy, belief, spiritualism or science?](#)

Juha-Matti Huusko in Japan:

• [Visiting Japan](#)

• [Travelling in Japan with train](#)

• [Japanese food and things](#)

• [Studying Japanese in Joensuu](#)

• [Hotels in Japan](#)

• [Birds eye view on Tokyo](#)

• [Visiting Moominvalley park in Tokyo](#)

• Front page: A Moomin mug.¹

Coming events

• Saturday 17.8. at 16: **UEFDSA SummerBBQ 2019** in backyard of Snellmania/Melania, Kuopio. Hosted by Miia, tel. +358 50 408 1731.

• Wednesday 21.8. at 16–18: **miniseminar, What to do after Ph.D.?** The seminar will address how to do job hunting. What are the companies potentially looking for Ph.D. students? What skills do we essentially need to have to go into the job market?

UEFDSA newspaper

ISSN 2669-8951 (electronic)

ISSN 2669-8943 (printed)

Made by University of Eastern Finland Doctoral Student Association (Itä-Suomen yliopiston jatko-opiskelijoiden yhdistys - UEF DSA ry)

Appears once a month in pdf and print.

Editor 1 Juha-Matti Huusko

Editor 2 Ari J. Tervashonka

Advertising contact Ari J. Tervashonka
aritervashonka@hotmail.com

Writers

• Juha-Matti Huusko

• Ari Tervashonka

• Become a writer! By writing 6 stories per year, you get an official writer status and a certificate.

Photographers

• Become a photographer! By sending us 20 photos per year, you get an official photographer status and a certificate.

Contact us at uefdsa@protonmail.com



¹This design is only sold in Tokyo. Would you like to buy one? Contact Juha-Matti, tel. +358 40 528 2815.

VISITING JAPAN

By JUHA-MATTI HUUSKO

During 8.-19.7.2019, I was on a research visit in Japan. I visited three places about which I will shortly tell now.

Tohoku University

At first, I visited Toshiyuki Sugawa in Tohoku University. I gave a talk “On Becker’s univalence criterion”³.

Hayama Symposium



The main reason for me to travel to Japan was to meet **Katsutoshi Yamanoi**. Yamanoi has solved many famous questions in Nevanlinna theory. The proof⁴ of Mues’ and Goldberg conjectures is being discussed in Mathematics Research Seminar at UEF during 2019-2020.



Hideki Miyachi knows much about Teichmüller spaces. In his talk, Miyachi gave the Poisson integral formula for pluriharmonic functions on Teichmüller space which are continuous on the Bers closure.



Junhiro Noguchi and **T. Ochiai**

made a classical book⁵ about several complex variables.



I also met **Yuta Kusakabe** and **Shun Sugiyama**. Kusakabe is currently Yamanoi’s student in Osaka. Moreover, Yamanoi was Sugiyama’s supervisor during his MSc.

Tokyo Institute of Technology



Tomoki Kawahira studies dynamical systems. **Hiroshige Shiga** is retired and knows much about Teichmüller spaces.

³materials: <http://integraali.com/becker/>

⁴K. Yamanoi, *Zeros of higher derivatives of meromorphic functions in the complex plane*, Proc. London Math. Soc. (3) 106 (2013) 703–780.

⁵J. Noguchi and T. Ochiai, *Geometric function theory in several complex variables*, Translations of Mathematical Monographs 80, American Mathematical Society, Providence, RI, 1990.

Traveling in Japan with train

Taking a train is a good way to travel in Japan. For a tourist, an economical option is to take a Japan Rail Pass (JR Pass), which gives unlimited train trips for a time period (7/14/21 days). I bought a 7 day pass (251 €) through Kaleva Travel: <https://kalevatravel.fi/elamykset/junamatkat/japan-rail-pass/>

JR Pass is meant only for tourists. Nationals and visa holders cannot buy the pass (except, if

you are a national and have lived abroad at least 10 years).

The fastest trains are called Shinkansen.

Tohoku shinkansen took me from Tokyo to Sendai. From Sendai, I visited the Matsushima beach and took the local train.

Tokaido shinkansen took me from Tokyo to Kyoto. I learned that there are 3 different shinkansen. Nozomi train, which cannot be taken with JR Pass, is the fastest and stops only on 6 stations. Hikari stops in some stations, which vary depending on the train. Kodama⁶ train is the slowest and stops in all stations.



Traveling 832 km (Sendai-Tokyo-Kyoto) took 4 h41 min during 14:30–16:04 and 16:33–19:11. In Finland, traveling the same distance, Joensuu-Helsinki-Vaasa, takes 7 h18 min. Well, the population in Japan is 23 times that of Finland, while the land area is the same.

Information: <http://www.japanrailpass.net/en/>

Japanese food and things

Anime. Jotkut (Joensuun Otakut) arranges hangouts in Normaalioulu. The new hangout season will start in the Autumn. The name of the association comes from the word “otaku”, which means a person who likes Japanese culture. <http://jotkut.animeunioni.org/>

Miso is fermented soy bean paste which is added to water to make soup. If you wish to eat miso at home, you can buy a small kit from Prisma or Citymarket. If you have a bigger appetite, you can buy miso from It's Pure shop from

Isomyy.



Natto is a healthy and strange breakfast. This dish made from fermented soy beans was originated when boiled soy beans were carried in containers made from straws. The natto starter culture contains a *Bacillus subtilis* and can now be introduced more efficiently without straws.

Okonomiyaki is a pancake of “whatever you want to eat”.

Sashimi means raw fish. You

can buy raw tuna from e.g. City-market with price around 27 €/kg.

Sushi comes from the expression “su shi” which means “it is sour”. Therefore, the main ingredient in sushi is the rice, which has been seasoned with rice vinegar. You can eat sushi at least in Sushi Joensuu, Torikatu 30. You can also buy ready made sushi from City-market or buy a kit and make it yourself.



Takoyaki is a ball with octopus, egg and vegetables.

⁶By the way, “hikari” means an enthusiastic student in Finnish and unfortunately is used as a bullying word. When bullied a “hikari” can perhaps refer to the slower students as “kodama”.

Tempura is stir fried food, which is coated with batter.

Sake is the traditional Japanese alcohol drink. The taste is quite mild and the alcohol percentage is low, perhaps 15–17 %. Sake has a sweet variant, “umeshu” which contains Japanese plums. For example, I bought once a bottle of “Choya Royal Honey Umeshu Plum” by ordering it in Alko shop.



Matcha is finely ground green tea. Japanese tea is made by using matcha, which is added to a bowl of hot water or milk and mixed to have even consistency. In Joensuu, it can be best enjoyed in Mokkamaa in Kauppakatu 25.



Yen coins in Wikipedia.

Yen is the official currency of Japan. The 500 ¥ coin is very beautiful.



The 1 ¥ and 5 ¥ coins cannot be used in vending machines. You will end up with lots of them.

FamilyMart is a Japanese convenience shop. There are others such as Lawson shop or 7 eleven. But! While you are choosing your food items in FamilyMart, you will hear their shop jingle and feel addicted to it. <https://www.youtube.com/watch?v=8oYcve8Xx00>



Neko means cat. If you had to, would you drink the dragon beer or cat beer?



Kawaii means cute. As an example, look at the baby owl in the lid of the tea pot.



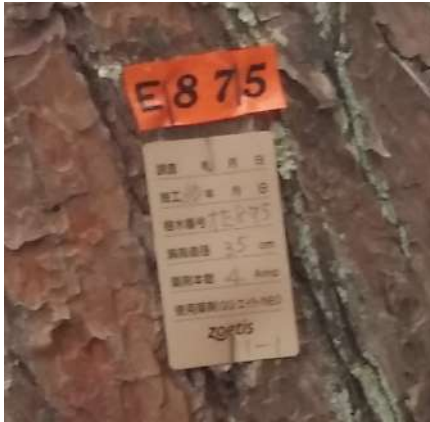
Rickshaw (jinrikisha) is a passenger wagon, which is pulled by a person.



The imperial garden is just next to Tokyo station. It is easy to visit by walking (walking a lot). If you want to go inside, you should book your ticket beforehand.



English. In general, Japanese people are not very fluent with English, but you can communicate.



Organized. In some places, Japan is very well organized. Tree number 875 in Matsushima.



Japanese students work hard, also in extra curricular activities such as cleaning the street.

Studying Japanese in Joensuu

You can study at least 60 ECTS of Japanese language and culture in Finnish at UEF.

The registration to course 2133007, *J:Japanin kielen ja kulttuurin johdantoluennot*, 2 op starts 1.8.2019 at 10am.

I bet Kansalaisopisto arranges courses too.

To study the writing symbols, you can take a look on the fabulous blog by Silja Ijäs: <http://kanjikaveri.net/blogi/tietoja/>

Hotels in Japan

I stayed in a few hotels in Japan. Especially, I liked to stay in a capsule hotel, where you have a 80 x 80 x 250 cm capsule to sleep, since it feels efficient and economical. Also, in Kyoto, I stayed in a beautiful 100 years old Japanese house with the most friendly staff.

Nihonbashi Muromachi Bay Hotel, Tokyo (30 €/night)

- a capsule hotel! Small capsule to sleep.
- cheap and in center
- near Tokyo station (walk the road across the river, reach Yaesu gate)
- many small shops nearby
- nice shower, laundry, lobby

Royal Mayflower Hotel, Sendai (31 €/night)

- easy to find (walk 1 km along big road from Sendai station)
- small room, small shower

Shonan Village Center, Hayama

- more costly
- good breakfast. A Finnish guy like me will start to drool about the French fries already in the evening.

Kyoto Station Base & Cafe, Kyoto (40 €/night)

- the most friendly receptionist ever!
- 100 years old Japanese house
- easy to find (South from Kyoto station). Kyoto station is just next to Kyoto Tower, which is an easy landmark.

Birds eye view on Tokyo



Zojoji temple as seen from the main floor of Tokyo tower.



Tokyo Tower is 333 m high, while the main floor is 150 m above ground.



Tokyo Skytree is 634 m high, but Juha-Matti did not go there.

Visiting Moominvalley park in Tokyo

Tove Jansson (1914-2001) created the Moomin characters in 1940's and continued the work for next 60 years. Moomins were introduced in books and comics. Afterwards there have been animations, plays, operas etc.

Moomins are white creatures, having the appearance of hippopotamus. The main focus in the stories is on one family of Moomins who live in a tall blue house. The family lives in Moominvalley. The village has many other characters who have their own passions.

As Wikipedia explains, the most famous animation series are "Tanoshii Mumin Ikka" (78 episodes, made in Japan 1990-1991) and the sequel "Tanoshii Mumin Ikka: Boken Nikki" (26 episodes, made in Japan 1991-1992). Most likely, you can watch these series in English in Youtube.

You can meet Moomins in two theme parks. One is in Naantali, Finland, and the another in Hanno/Tokyo Japan.

On 16.7.2019, I headed to **Moominvalley park** in Hanno,

Japan.

Directions:

- take subway to Ikebukuro (10 km with Marunouchi line)
- take train to Hanno (40 km with Seibu line)
- take bus to park site (10 mins, 200 ¥). It is a specific train pointed with clear signposts.

At first, you arrive to **Metsä**, which is a free-entry park next to a lake. There are shops with Scandinavian products. You can walk around 1 km until you reach the gate of Moominvalley park.

The entry costs 1100 ¥. The area is 1.5 km long walk next to Lake Miyazawa. There are small shops and buildings along the way, each having a Finnish name. There are many beautiful things to buy in the small shops. The main item to buy is a mug.



Pikku Myy shop

Furthest place in the end of the path is Nuuskamuikkunen's tent. On a nearby hill, there is Hemuli's observatory and other houses.

Kokemus is a 3 storied museum and its one of the large build-

ings in the midway of the park. In the ground floor, there is a shop and a restaurant. On the second floor, life and work of Tove Jansson is discussed. Third floor presents the plot of some famous Moomin story. The staircase is decorated with a model of the Moominvalley.

Some houses require an extra ticket. Going to the tall blue Moomin house is a must (cost 1000 ¥). The Moomin house has three floors and a basement. The first floor of Moomin house contains the kitchen and the living room, while the other rooms are upstairs. The main food storage is in the basement. The guide, **Sari Yoshihara** gives a vivid explanation about different things in the house. Sari also knows good Finnish and points out some words.



The blue Moomin house

The theater house tells the story of Moomin boat and airship (1000 ¥ ticket). The presentation is very vivid. You can experience the whole thunderstorm as the Moomin airship tries to find its way to safety.

- Metsä info: <https://metsa-hanno.com/eng/>
- Metsä map: https://metsa-hanno.com/assets/images/map/MV_map.pdf
- Moominvalley Park info: <https://metsa-hanno.com/moominvalleypark/>
- Moominvalley Park map: https://metsa-hanno.com/assets/images/map/MVP_map.pdf
- Lisää suomeksi: <https://www.hs.fi/kulttuuri/art-20000006131011.html>